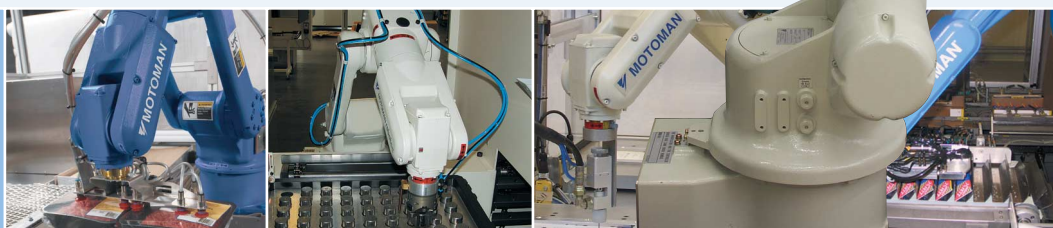
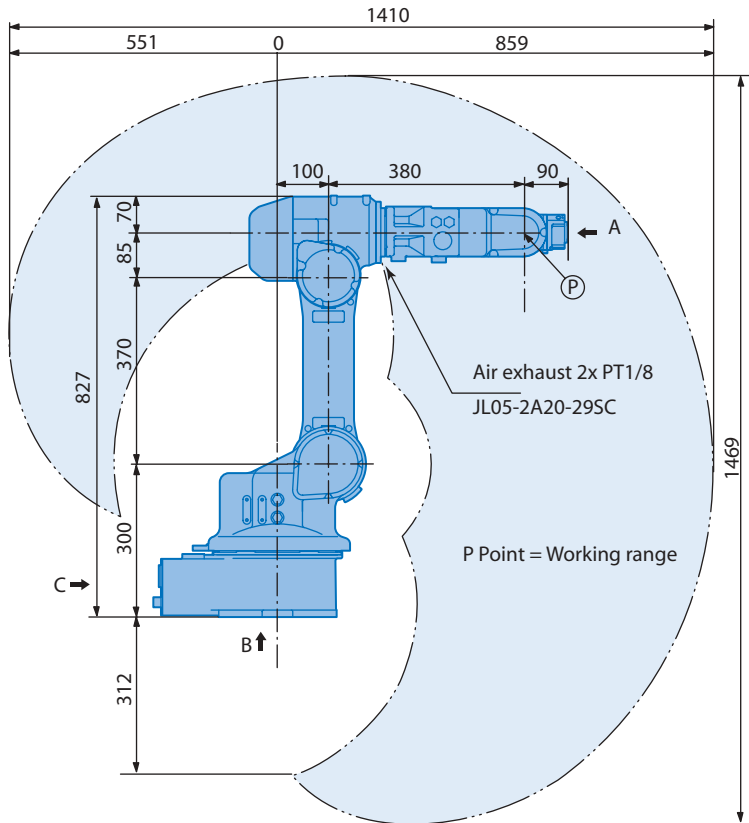


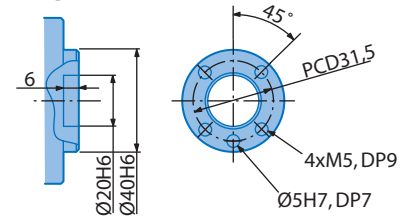
General purpose robot
MOTOMAN-HP3L



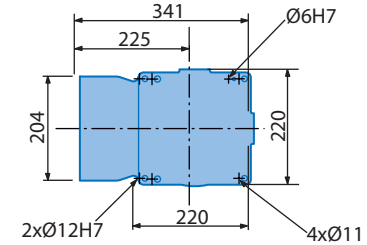
 MOTOMAN®



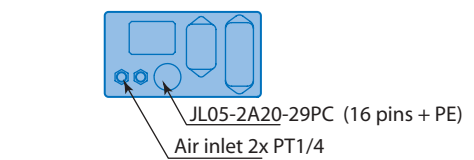
View A



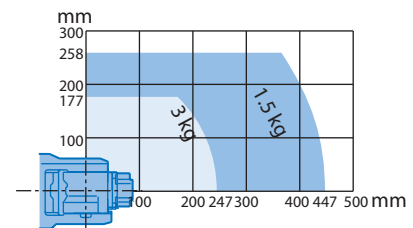
View B



View C

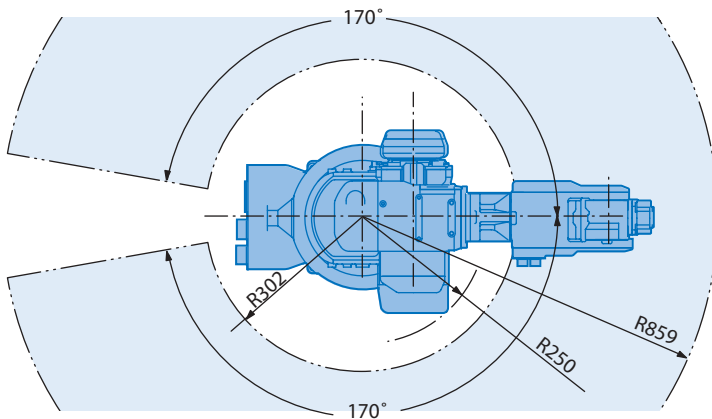


Maximum payload



Note

These dimensions are for reference only. Please request detail drawings for all design or engineering requirements.



Technical Specification for MOTOMAN-HP3L

Controlled axis	6					
Payload	3 kg					
Repeatability	±0.04 mm	Axis	Motion range	Maximum speed	Allowable moment	Allowable inertia
Weight	49 kg	S	±170°	250°/s	-	-
Power requirements	1 kVA	L	+150°, -45°	180°/s	-	-
Mounting positions	Floor, wall ¹⁾ and ceiling	U	+235°, -144°	225°/s	-	-
Wrist unit protection class	IP67	R	±190°	375°/s	7.25 Nm	0.30 kg·m ²
Robot body protection class	N.C. ²⁾ , (IP65 option)	B	±125°	375°/s	7.25 Nm	0.30 kg·m ²
Ambient conditions	0 to +45°C, 20-80% RH	T	±360°	500°/s	5.21 Nm	0.1 kg·m ²

¹⁾ S-axis limitations
²⁾ Not classified for standard version.

Technical data may be subject to change without previous notice · Motoman Robotics Europe AB 2005 · Reg.No.MRS6223GB.0.L



European Headquarters
 Motoman Robotics Europe AB
 Box 4004, SE-390 04 Kalmar, SWEDEN
 Phone +46 (0)480 417 800
 Fax 046 (0)480 417 999
 www.motoman.se

Production unit
 Motoman Robotics Europe AB
 Box 504, SE-385 25 Torsås, SWEDEN
 Phone: +46 (0)480-417 800
 Fax: +46-(0)486-414 10

