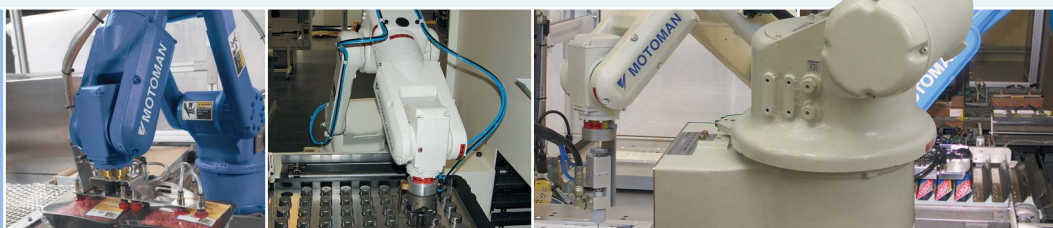
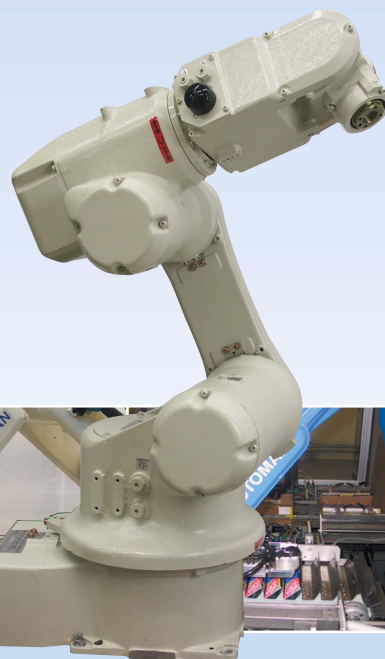
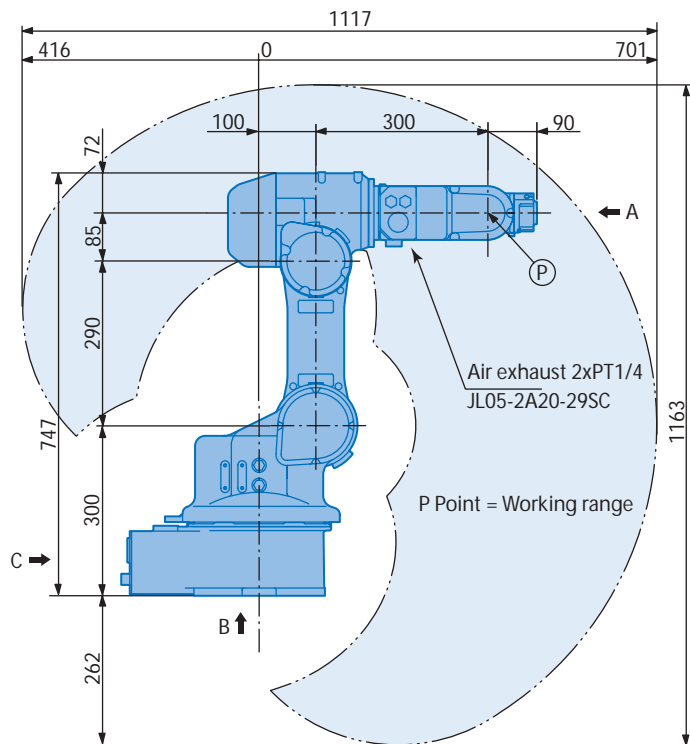


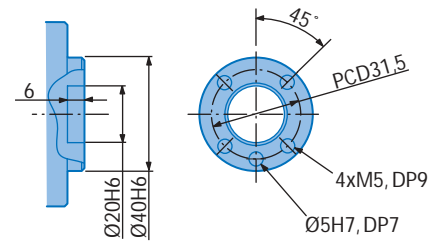
General purpose robot
MOTOMAN-HP3XF
MOTOMAN-HP5



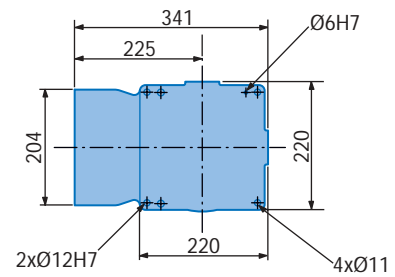
MOTOMAN-HP3XF



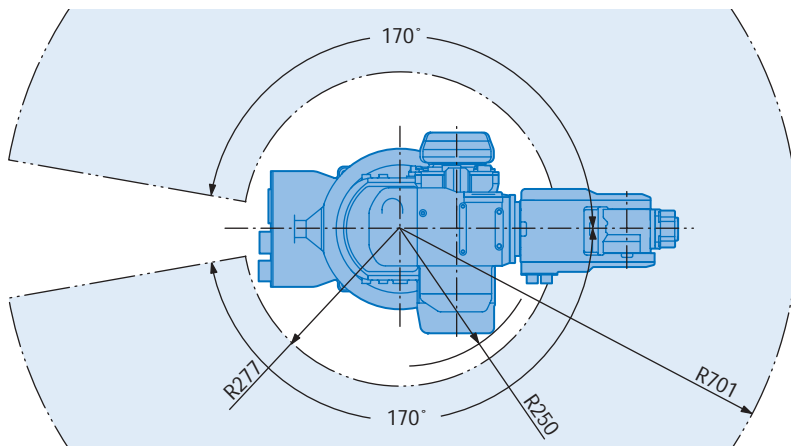
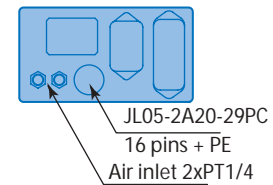
View A



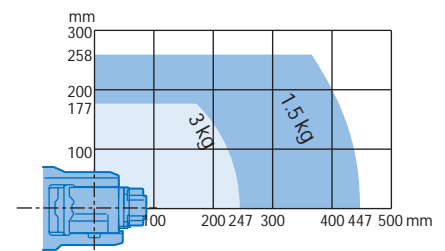
View B



View C



Maximum payload



Note

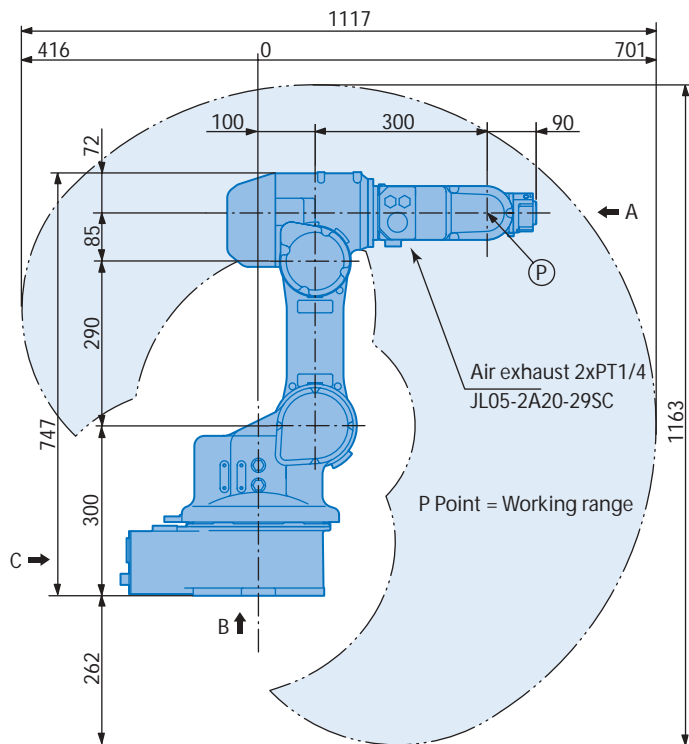
These dimensions are for reference only. Please request detail drawings for all design or engineering requirements.

Technical Specification for MOTOMAN-HP3XF

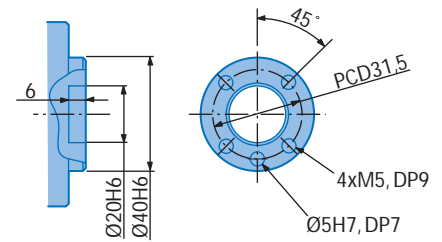
| Controlled axis | 6 | Axis | Motion range | Maximum speed | Allowable moment | Allowable inertia |
|-----------------------------|---------------------------------------|------|--------------|---------------|------------------|------------------------|
| Payload | 3 kg | | | | | |
| Repeatability | ±0.03 mm | S | ±170° | 250°/s | - | - |
| Weight | 47 kg | L | +150°, -45° | 180°/s | - | - |
| Power requirements | 1 kVA | U | +210°, -152° | 225°/s | - | - |
| Mounting positions | Floor, wall ¹⁾ and ceiling | R | ±190° | 375°/s | 7.25 Nm | 0.30 kg·m ² |
| Wrist unit protection class | N.C. ²⁾ , (IP67 option) | B | ±125° | 375°/s | 7.25 Nm | 0.30 kg·m ² |
| Robot body protection class | N.C. ²⁾ , (IP65 option) | T | ±360° | 500°/s | 5.21 Nm | 0.10 kg·m ² |
| Ambient conditions | 0 to +45°C, 20-80% RH | | | | | |

¹⁾ S-axis limitations.

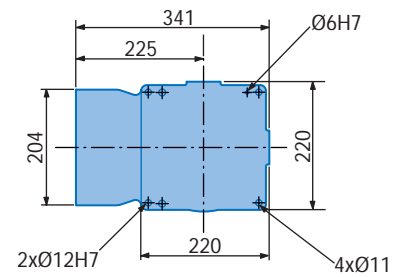
²⁾ Not classified for standard version.



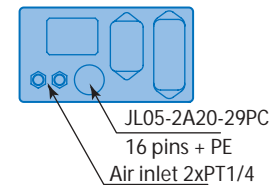
View A



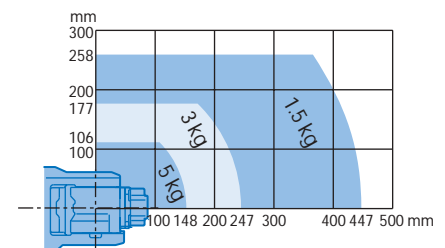
View B



View C



Maximum payload



Note

These dimensions are for reference only. Please request detail drawings for all design or engineering requirements.

Technical Specification for MOTOMAN-HP5

| Controlled axis | 6 | Axis | Motion range | Maximum speed | Allowable moment | Allowable inertia |
|-----------------------------|---------------------------------------|------|-----------------|---------------|------------------|------------------------|
| Payload | 5 kg | | | | | |
| Repeatability | ± 0.03 mm | S | $\pm 170^\circ$ | 250°/s | - | - |
| Weight | 47 kg | L | +150°, -45° | 180°/s | - | - |
| Power requirements | 1 kVA | U | +210°, -152° | 225°/s | - | - |
| Mounting positions | Floor, wall ¹⁾ and ceiling | R | $\pm 190^\circ$ | 375°/s | 7.25 Nm | 0.30 kg·m ² |
| Wrist unit protection class | N.C. ²⁾ , (IP67 option) | B | $\pm 125^\circ$ | 375°/s | 7.25 Nm | 0.30 kg·m ² |
| Robot body protection class | N.C. ²⁾ , (IP65 option) | T | $\pm 360^\circ$ | 500°/s | 5.21 Nm | 0.10 kg·m ² |
| Ambient conditions | 0 to +45°C, 20-80% RH | | | | | |

¹⁾ S-axis limitations.

²⁾ Not classified for standard version.

MOTOMAN offices and representatives near you

MOTOMAN Headquarters

SE MOTOMAN Robotics Europe AB
Kalmar +46-480-417800

DE MOTOMAN robotec GmbH
Allershausen +49-8166-90-0

MOTOMAN Company group

AT MOTOMAN robotec GmbH
Vienna +43-1-707 9324 15

CZ MOTOMAN robotec Czech s.r.o.
Prague +420-251-618430

DE MOTOMAN robotec GmbH
Frankfurt +49-6173-607730

DK MOTOMAN Robotics Europe AB
Løsning +45 7022 2477

ES MOTOMAN Robotics Iberica S.L.
Barcelona +34-93-6303478

FI MOTOMAN Robotics Finland Oy
Turku +358-40300600

FR MOTOMAN Robotics S.A.
Nantes +33-2-40131919

IT MOTOMAN Robotics Italia SRL
Modena +39-059-280496

NL MOTOMAN benelux B.V.
Breda +31-76-5302305

PT MOTOMAN Robotics Iberica S.L.
Aveiro +351-234-943 900

SE MOTOMAN Robotics Europe AB
Torsås +46-480-417800

SI MOTOMAN robotec d.o.o.
Ribnica +386-1-8372-410

SI Ristro d.o.o.
Ribnica +386-1-8372-410

UK MOTOMAN Robotics UK Ltd
Banbury +44-1295-272755

Distributors

BG Kammarton Bulgaria Ltd
Sofia +359 (02) 926 6060

CZ Hadyňa International spol. s.r.o.
Ostrava-Mariánské Hory +420 596 622 636

CZ SP-Tech s.r.o.
Nymburk +420 325 515 105

CH MESSER Eutectid Castolin Switzeland S.A.
Dällikon +41-44-847 17 17

GR Kouvalias Robotics
Avlona +30-22950 42902

HU Rehm Hegesztéstechnika Kft
Budapest +36-53-380 078

HU Flexman Robotics Kft.
Budapest +36-30-951 0065

IL KNT Robotics Ltd
Beit Shemesh +972-2-9905882

IL Uniweld Ltd
Yavne +972-8-9328080

NO Optimove as
Lierstranda +47-32240600

PL Rywal-RHC
Torun +48 56 66 93 800

RU Weber Comechanics
Moscow +7 495 105 88 87

TR Teknodrom Robotics & Automation INC
Gebze/Kocaeli +90 262 678 8818

ZA Robotic Systems SA PTY Ltd
Johannesburg +27-11-6083182

European Headquarters

MOTOMAN Robotics Europe AB
Box 4004 • SE-390 04 Kalmar, SWEDEN
Phone: +46 (0)480-417 800
Fax: +46-(0)480-417 999

Production unit

MOTOMAN Robotics Europe AB
Box 504 • SE-385 25 Torsås, SWEDEN
Phone: +46 (0)480-417 800
Fax: +46-(0)486-414 10

www.motoman.se



Technical data may be subject to change without previous notice · MOTOMAN Robotics Europe AB 2007 · Reg. No. MRS6230.EN.1.L