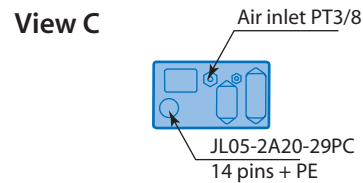
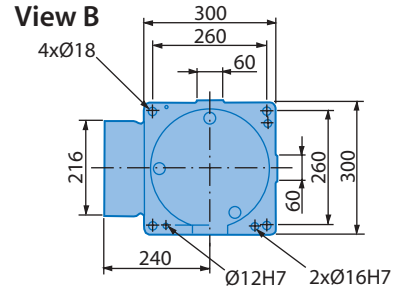
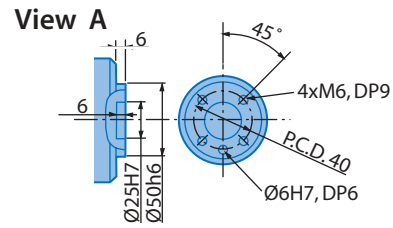
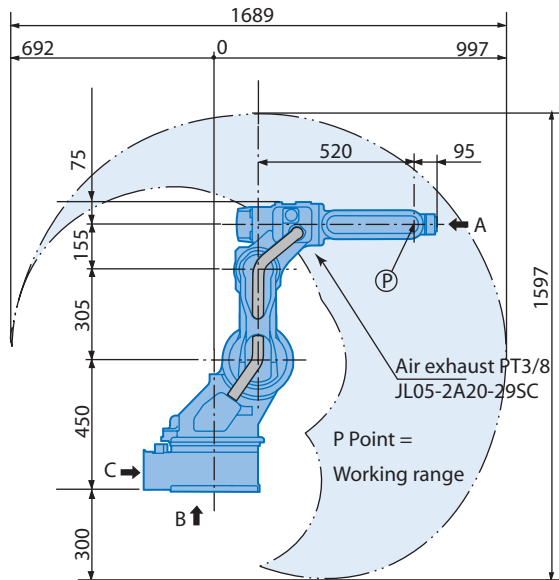


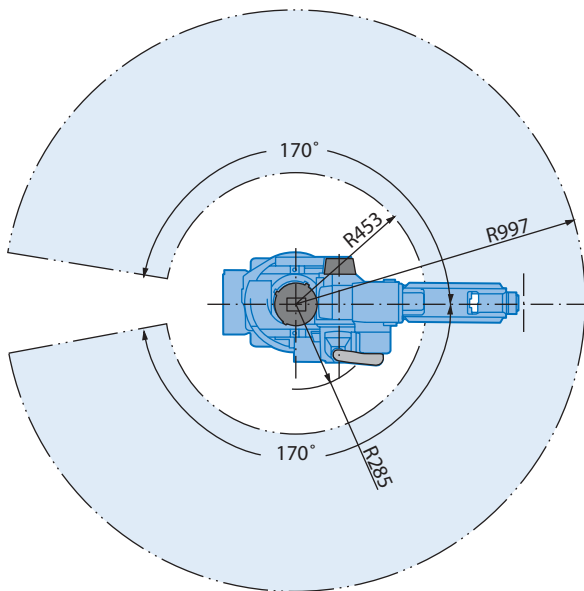
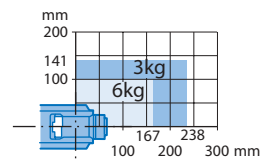
General purpose robot
MOTOMAN-HP6S



 MOTOMAN®



Maximum payload



Note

These dimensions are for reference only. Please request detail drawings for all design or engineering requirements.

Technical Specification for MOTOMAN-HP6S

Controlled axis	6					
Payload	6 kg					
Repeatability	±0.08 mm	Axis	Motion range	Maximum speed	Allowable moment	Allowable inertia
Weight	130 kg	S	±170°	180°/s	–	–
Power requirements	1.5 kVA	L	+133°, -80°	220°/s	–	–
Mounting positions	Floor, wall ¹⁾ and ceiling	U	+165°, -130°	220°/s	–	–
Wrist unit protection class	N.C. ²⁾	R	±180°	340°/s	11.8 Nm	0.24 kg·m ²
Robot body protection class	N.C. ²⁾	B	+225°, -45°	340°/s	9.8 Nm	0.17 kg·m ²
Ambient conditions	0 to +45°C, 20-80% RH	T	±360°	520°/s	5.9 Nm	0.06 kg·m ²

¹⁾ S-axis limitations

²⁾ Not classified for standard version. Optional IP-class pending.

Technical data may be subject to change without previous notice · Motoman Robotics Europe AB 2005 · Reg. No. MRS6222GB.0.L