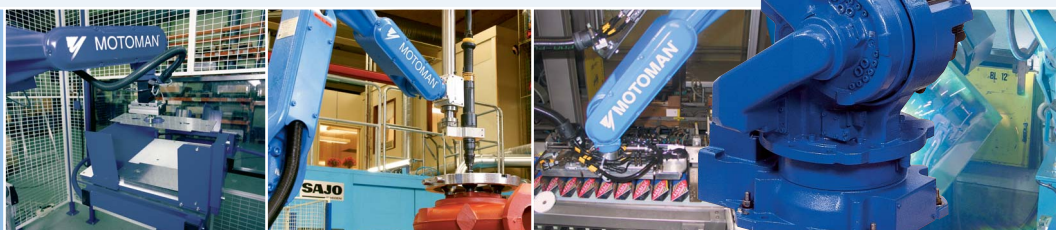
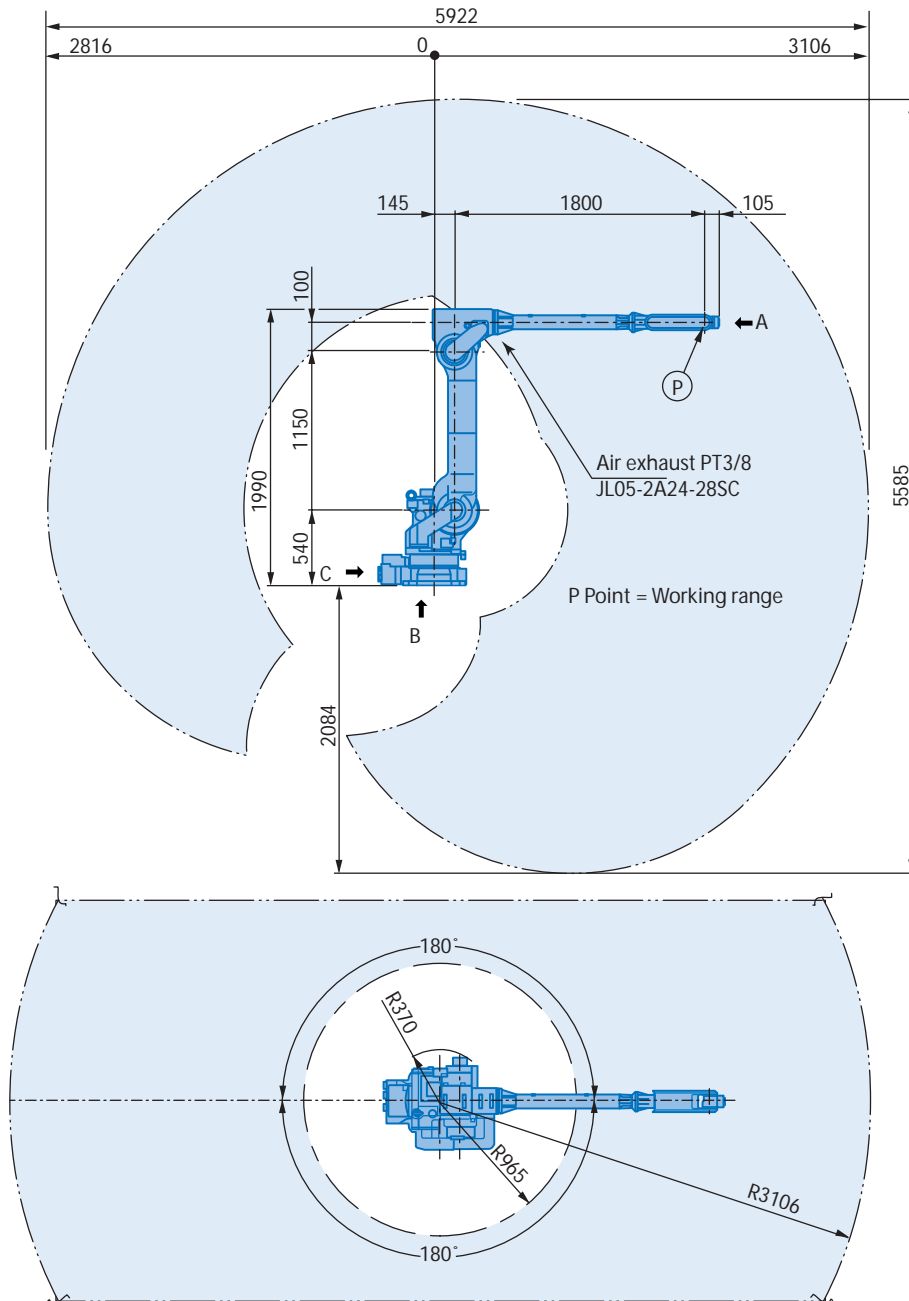


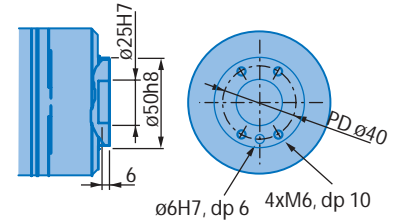
General purpose robot
MOTOMAN-UP20MN



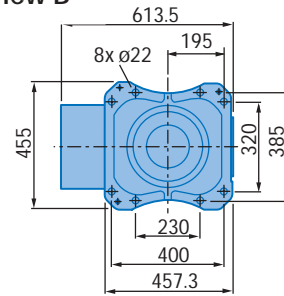
MOTOMAN-UP20MN



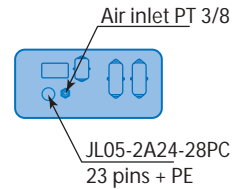
View A



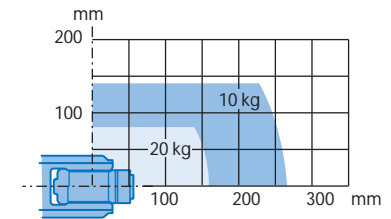
View B



View C



Maximum payload



Note

These dimensions are for reference only. Please request detail drawings for all design or engineering requirements.

Technical Specification for MOTOMAN-UP20MN

Controlled axis	6					
Payload	20 kg					
Repeatability	± 0.15 mm	Axis	Motion range	Maximum speed	Allowable moment	Allowable inertia
Weight	495 kg	S	$\pm 180^\circ$	170°/s	–	–
Power requirements	5.0 kVA	L	+135°, -90°	170°/s	–	–
Mounting positions	Floor, wall ¹⁾ and ceiling	U	+251°, -160°	175°/s	–	–
Wrist unit protection class	IP67	R	$\pm 190^\circ$	355°/s	31.4 Nm	0.7 kg·m ²
Robot body protection class	IP54 ²⁾ , (IP65 option)	B	+230°, -50°	335°/s	31.4 Nm	0.7 kg·m ²
Ambient conditions	0 to +45°C, 20-80% RH	T	$\pm 360^\circ$	510°/s	15.7 Nm	0.2 kg·m ²

¹⁾ S-axis limitations

²⁾ Floor mounted

Technical data may be subject to change without previous notice · Motoman Robotics Europe AB 2005 · Reg. No. MRS6224GB.0.L



European Headquarters
Motoman Robotics Europe AB
Box 4004, SE-390 04 Kalmar, SWEDEN
Phone +46 (0)480 417 800
Fax 046 (0)480 417 999
www.motoman.se

Production unit
Motoman Robotics Europe AB
Box 504, SE-385 25 Torsås, SWEDEN
Phone: +46 (0)480-417 800
Fax: +46-(0)486-414 10

