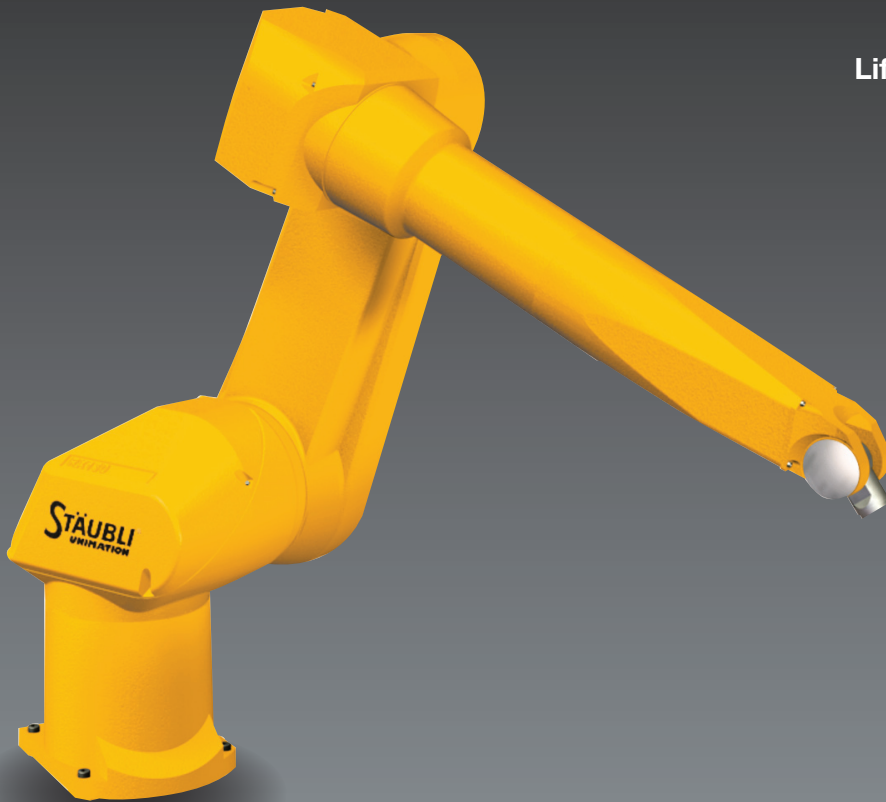


RX130 series industrial robots



Automotive and equipment
manufacturers

Cleanroom

Food

Life Sciences and pharma

Machine tending

Painting

Plastics

RS

Scara / 4 axis

TX

Low payload / 6 axis

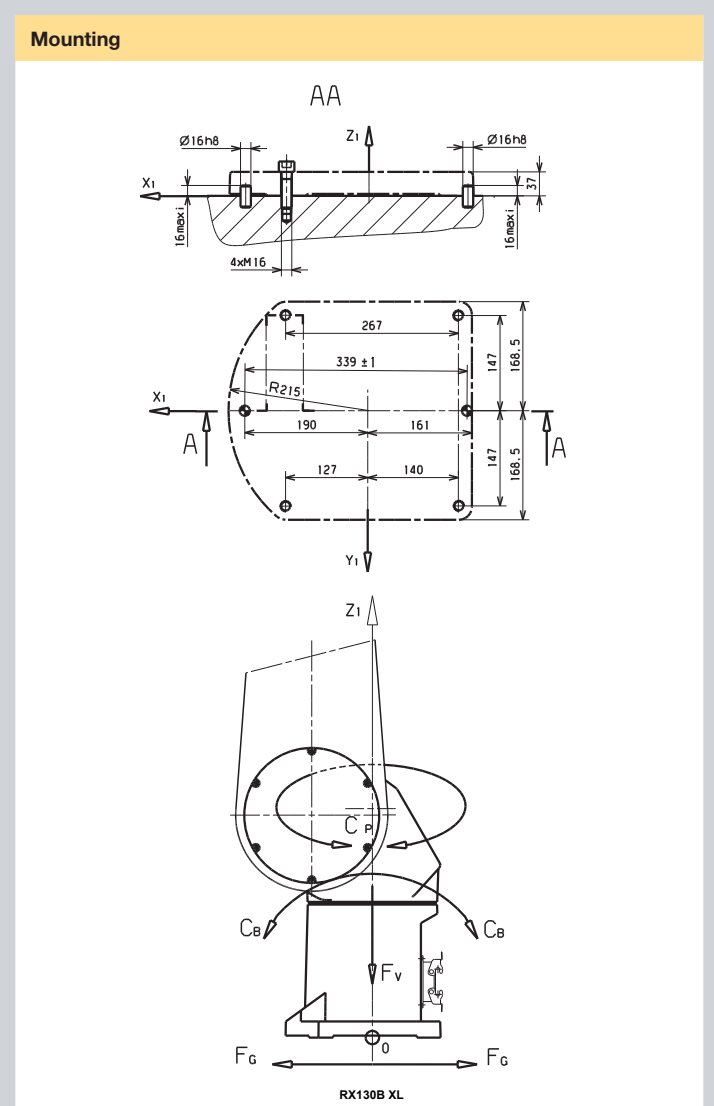
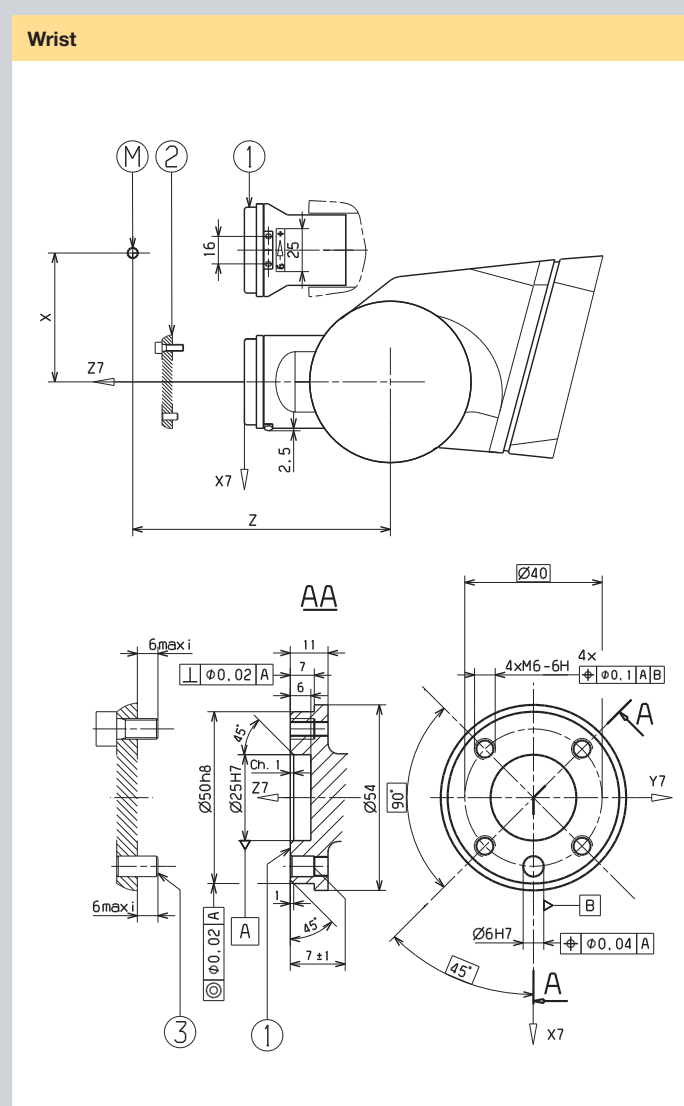
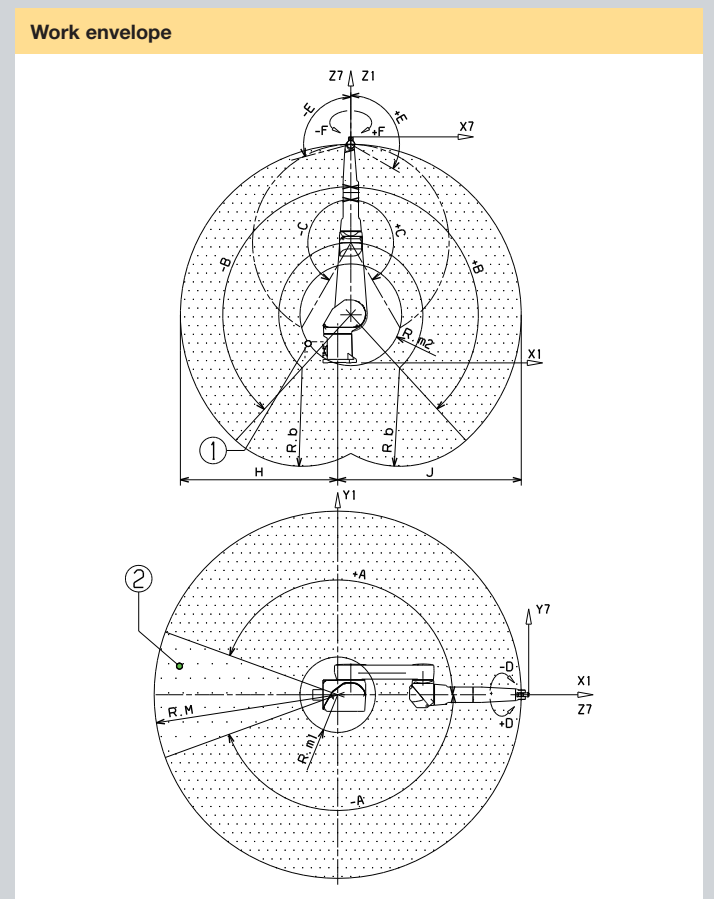
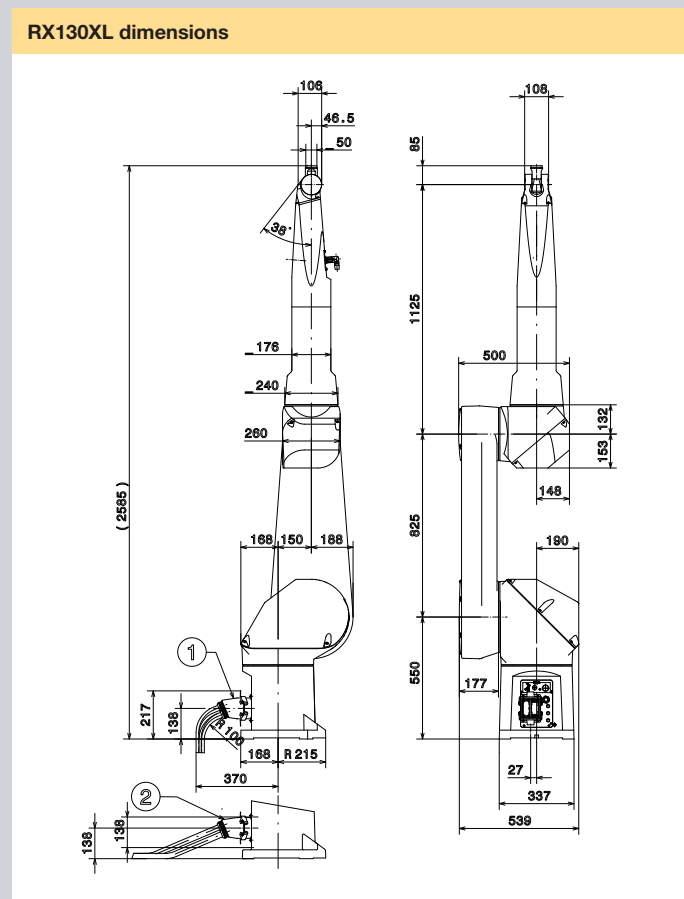
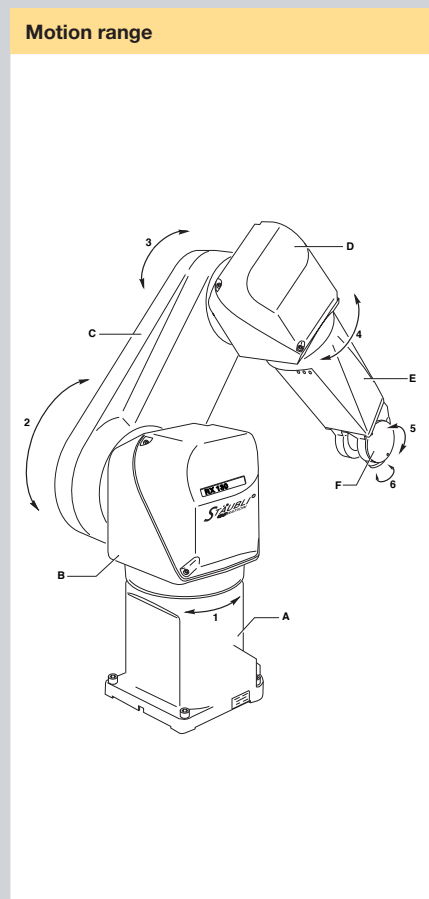
RX

Medium payload / 6 axis

RX

Heavy payload / 6 axis

MODEL		RX130XL
Characteristics		
Maximum load ⁽¹⁾		10 kg
Nominal load		6 kg
Reach (between axis 1 and 6)		2185 mm
Number of degrees of freedom		6
Repeatability - ISO 9283		± 0,05 mm
Motion range	Axis 1 (A)	± 160°
	Axis 2 (B)	± 137,5°
	Axis 3 (C)	± 150°
	Axis 4 (D)	± 270°
	Axis 5 (E)	+120°/-105°
	Axis 6 (F)	± 270° ⁽²⁾
Work envelope	Maximum reach between axis 1 and 5 (R. M)	2100 mm
	Minimum reach between axis 1 and 5 (R. m1)	432 mm
	Minimum reach between axis 2 and 5 (R. m2)	582 mm
	Minimum reach between axis 3 and 5 (R. b)	1125 mm
Maximum speed	Axis 1	278°/s
	Axis 2	278°/s
	Axis 3	356°/s
	Axis 4	409°/s
	Axis 5	480°/s
	Axis 6	1125°/s
Maximum speed at load gravity center		18,9 m/s
Maximum inertias	Axis 5	1,2 kg.m ²
	Axis 6	0,3 kg.m ²
Weight		245 kg
Brakes		All axis
Forearm connections	Pneumatic	2 solenoid valves 5/2-way (compressed air) monostable 1 direct line between the base and the forearm
	Electrical	1 female 19-contact socket (7 twisted pairs including 2 shielded, 3 power contacts)
Cleanroom standard - ISO 14644-1		5
Protection class (*wrist) according to standard NF EN 60529		IP65 (*67)
Stäubli CS8 series controller		CS8C or CS8 M
Installation environment		
Working temperature according to standard directive NF EN 60 204-1		+ 5°C to + 40°C
Humidity according to standard directive NF EN 60 204-1		30% à 95% max. non-condensing
Attachment methods		Floor/Ceiling
Pressurized version ⁽³⁾		•
Market specific versions		
CR Cleanroom - class 4 cleanliness - ISO 14644-1		•
Plastics - Euomap 12/67 interface		•
Paint - ATEX (Europe), Factory Mutual or cCSAus (USA) certifications		•



- (1) Under special conditions, consult us.
- (2) Software configurable up to ±18000°.
- (3) Pressurization kit : necessary for use in an environment with high dust levels or with substantial liquid splashing. This kit generates positive pressure in the arm. Factory installation only and required with Pressurization kit.



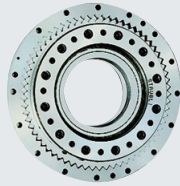
Product benefits

The RX130 robot series feature unique benefits to fit in all environments providing the best possible process quality and increased productivity.



WRIST

IP67 rating, submersible, high robustness, limited built-up on wrist.



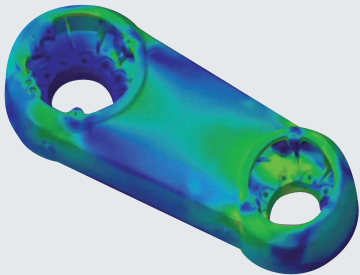
STÄUBLI PATENTED REDUCTION GEAR SYSTEMS

Unmatched precision, flexibility and speed, high rigidity, reduced maintenance.



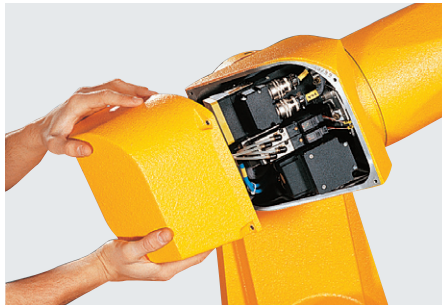
FOREARM CONNECTIONS

Electrical and pneumatic connections close to the tool, user lines already installed.



RIGID STRUCTURE

Better dynamic performance.



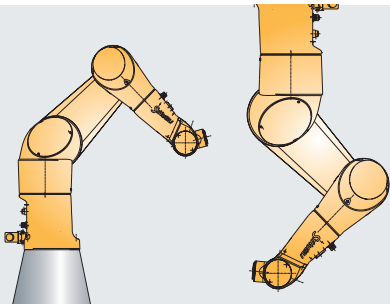
ENCLOSED STRUCTURE

Easy to clean and use in clean or hostile environments.



ARM FINISH

Smooth or textured, color customization.



MULTIPLE ATTACHMENT METHODS

Adaptability and flexibility (floor, ceiling).

www.staubli.com/robotics

Headquarters
FR-74210 FAVERGES (Annecy)
Tel.: +33 4 50 65 62 87
Fax: +33 4 50 65 61 30
robot.sales@staubli.com

STÄUBLI