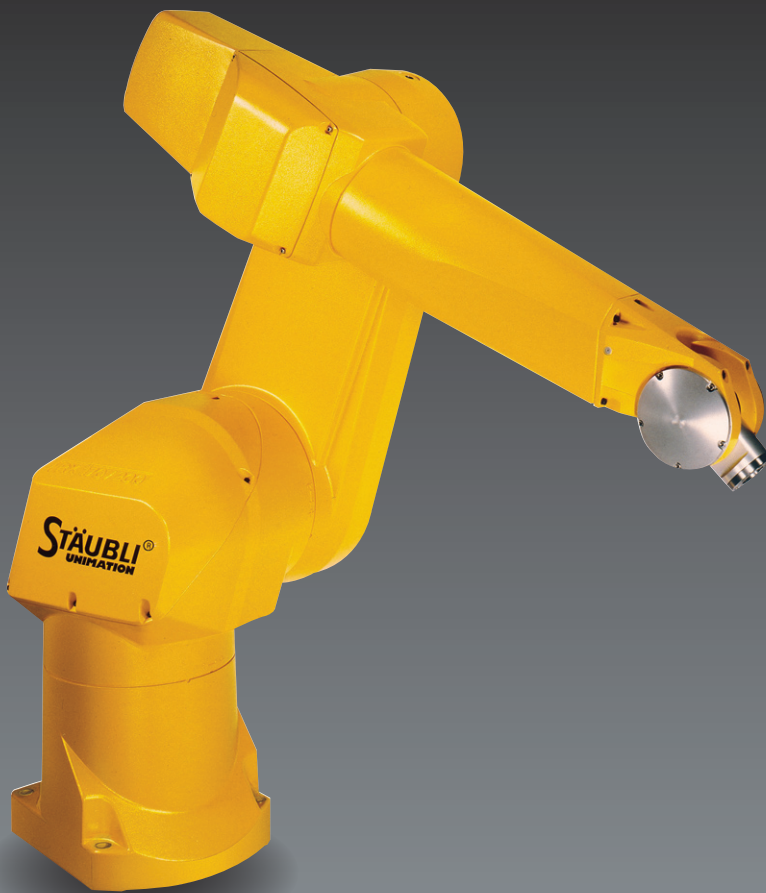


RX170 series industrial robots



Automotive and equipment
manufacturers

Cleanroom

Food

Life Sciences and pharma

Machine tending

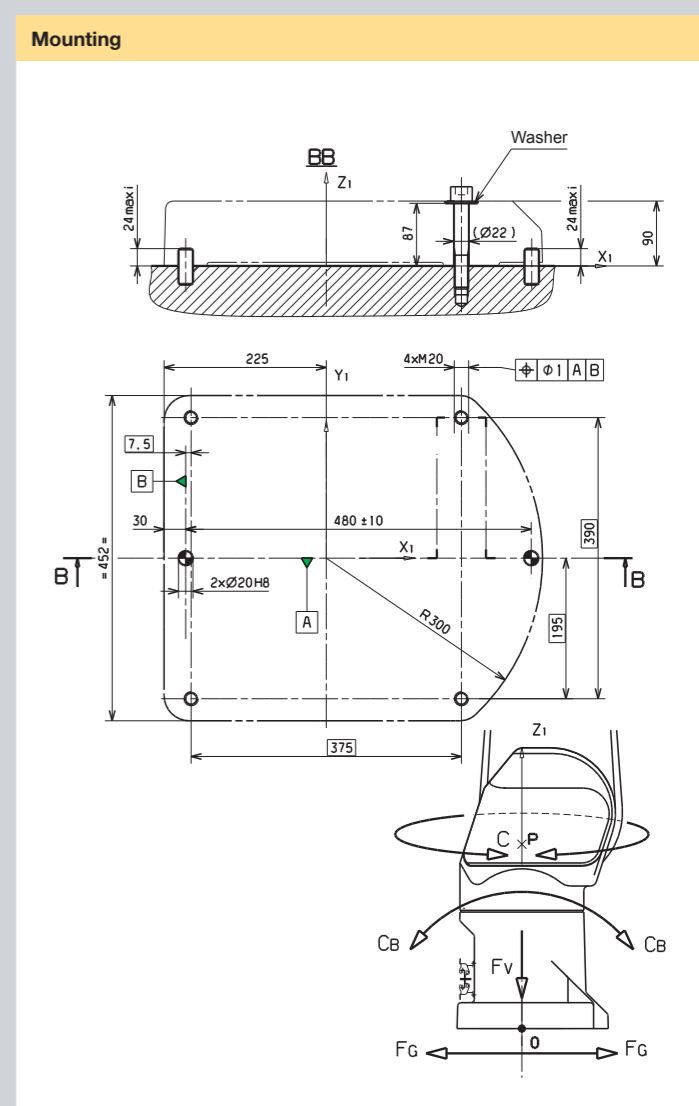
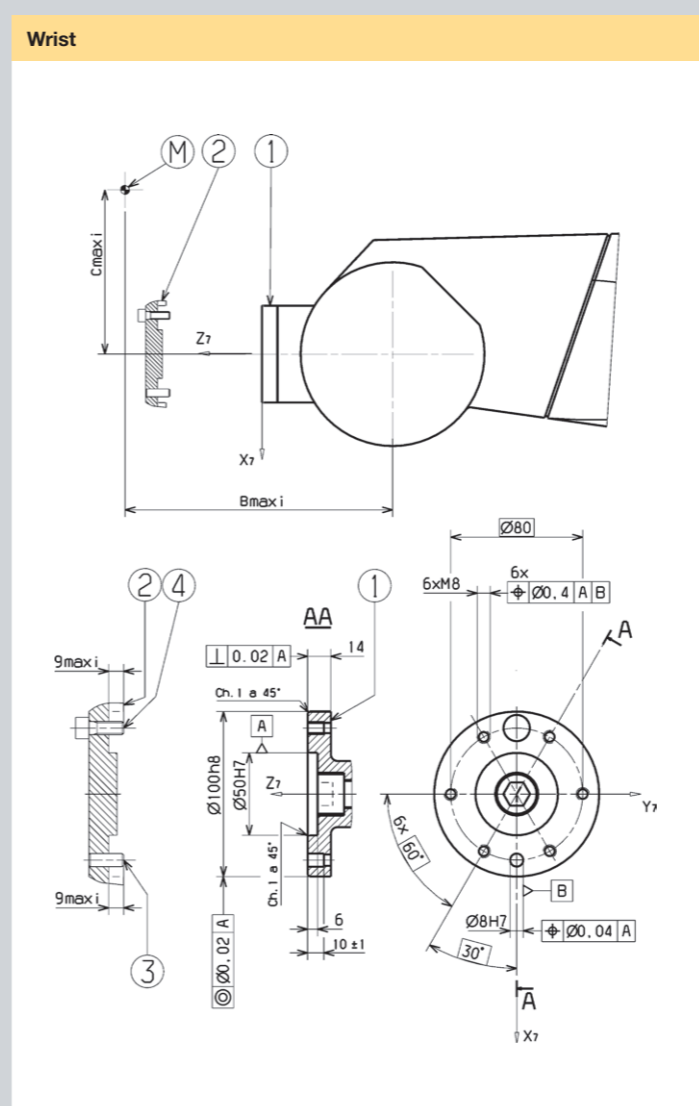
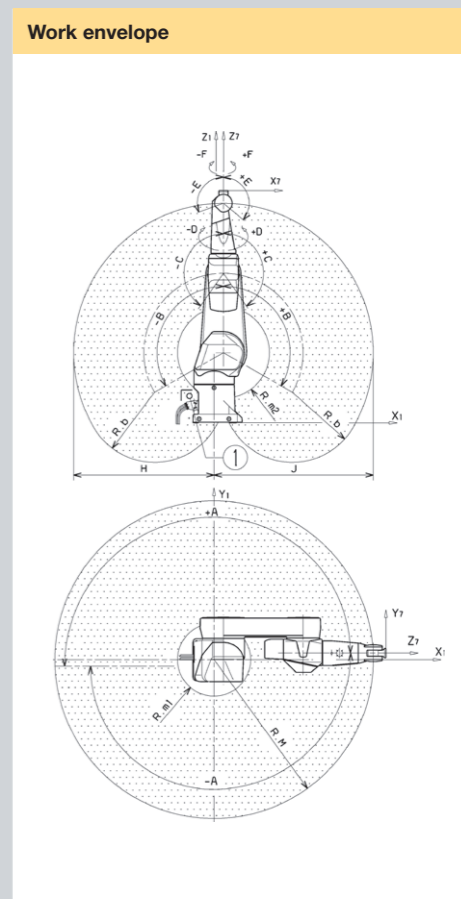
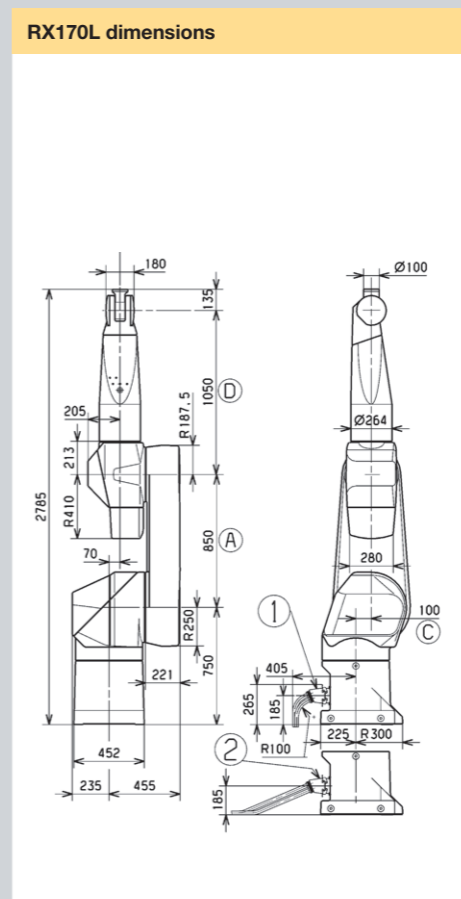
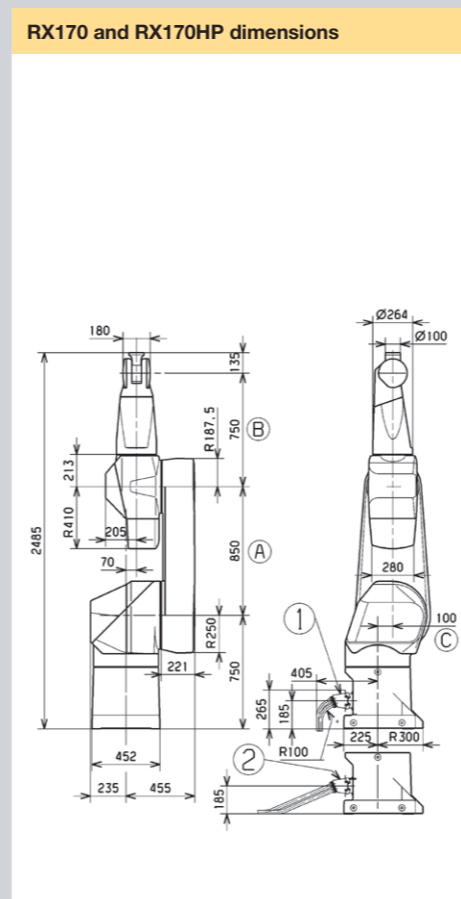
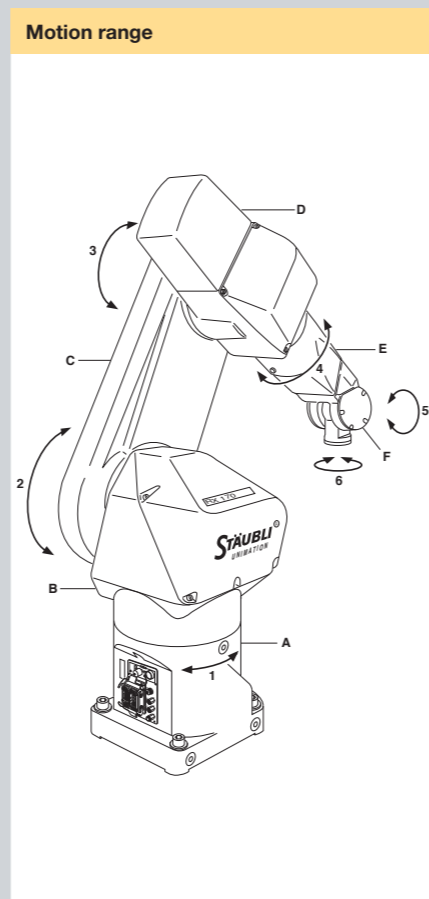
RS
Scara / 4 axis

TX
Low payload / 6 axis

RX
Medium payload / 6 axis

RX
Heavy payload / 6 axis

MODEL		RX170	RX170L	RX170HP
Characteristics				
Maximum load ⁽¹⁾		60 kg	45 kg	65 kg
Nominal load		30 kg	20 kg	60 kg
Reach (between axis 1 and 6)		1835 mm	2135 mm	1835 mm
Number of degrees of freedom		6	6	6
Repeatability - ISO 9283		± 0,04 mm	± 0,05 mm	± 0,04 mm
Motion range	Axis 1 (A)	± 180°	± 180°	± 180°
	Axis 2 (B)	± 120°	± 120°	± 120°
	Axis 3 (C)	± 145°	± 145°	± 145°
	Axis 4 (D)	± 270°	± 270°	± 270°
	Axis 5 (E)	+130°/-110°	+130°/-110°	+130°/-110°
	Axis 6 (F)	± 270° ⁽²⁾	± 270° ⁽²⁾	± 270° ⁽²⁾
Work envelope	Maximum reach between axis 1 and 5 (R. M)	1701,4 mm	2001,2 mm	1701,4 mm
	Minimum reach between axis 1 and 5 (R. m1)	390 mm	502 mm	390 mm
	Minimum reach between axis 2 and 5 (R. m2)	490 mm	602 mm	490 mm
	Minimum reach between axis 3 and 5 (R. b)	750 mm	1050 mm	750 mm
Maximum speed	Axis 1	155°/s	155°/s	155°/s
	Axis 2	130°/s	130°/s	130°/s
	Axis 3	205°/s	205°/s	205°/s
	Axis 4	237°/s	237°/s	237°/s
	Axis 5	243°/s	243°/s	151°/s
	Axis 6	562°/s	562°/s	562°/s
Maximum speed at load gravity center		11,9 m/s	14,6 m/s	5,8 m/s
Maximum inertias	Axis 5	13,5 kg.m ²	12,25 kg.m ²	27 kg.m ²
	Axis 6	2,15 kg.m ²	2,25 kg.m ²	3 kg.m ²
Weight		721 kg	726 kg	726 kg
Brakes		All axis		
Forearm connections	Pneumatic	2 solenoid valves 5/2-way monostable 1 direct line between the base and the forearm		
	Electrical	1 female 19-contact socket (7 twisted pairs including 2 shielded, 3 power contacts)		
Cleanroom standard - ISO 14644-1		5		
Protection class (*wrist) according to standard NF EN 60529		IP65 (*67)		
Stäubli CS8 series controller		CS8 or CS8 M		
Installation environment				
Working temperature according to standard directive NF EN 60 204-1		+ 5°C to + 40°C		
Humidity according to standard directive NF EN 60 204-1		30% à 95% max. non-condensing		
Attachment methods		Floor		
Pressurized version ⁽³⁾		•	•	•
HE (Humid Environment) version ⁽⁴⁾		•	•	•
Market specific versions				
CR Cleanroom - class 4 cleanliness - ISO 14644-1		•	•	•

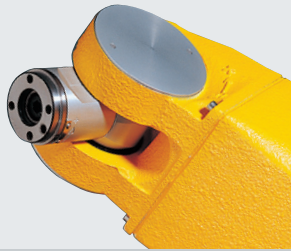


- (1) Under special conditions, consult us.
- (2) Software configurable up to ±18000°.
- (3) Pressurization kit : necessary for use in an environment with high dust levels or with substantial liquid splashing. This kit generates positive pressure in the arm. Factory installation only and required with Pressurization kit.
- (4) Pressurization kit : necessary for use in an environment with high dust levels or with substantial liquid splashing. This kit generates positive pressure in the arm. Factory installation only and required with Pressurization kit..



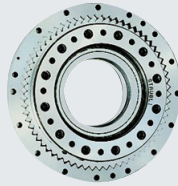
Product benefits

The RX170 robot series feature unique benefits to fit in all environments providing the best possible process quality and increased productivity.



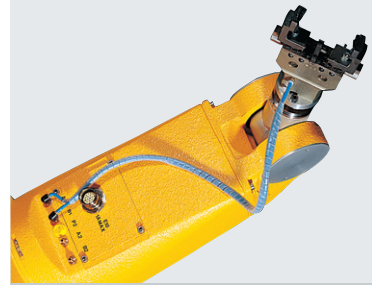
WRIST

IP67 rating, submersible, high robustness, limited built-up on wrist.



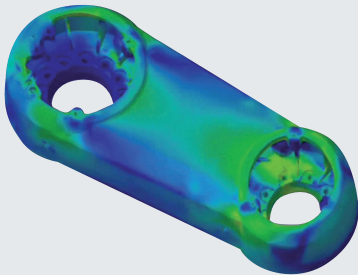
STÄUBLI PATENTED REDUCTION GEAR SYSTEMS

Unmatched precision, flexibility and speed, high rigidity, reduced maintenance.



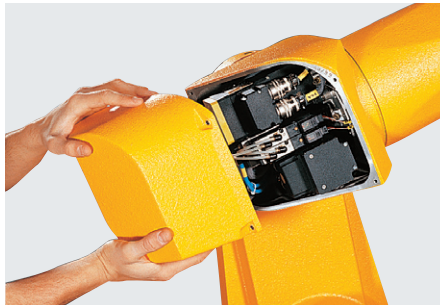
FOREARM CONNECTIONS

Electrical and pneumatic connections close to the tool, user lines already installed.



RIGID STRUCTURE

Better dynamic performance.



ENCLOSED STRUCTURE

Easy to clean and use in clean or hostile environments.



ARM FINISH

Smooth or textured, color customization.

www.staubli.com/robotics

Headquarters
FR-74210 FAVERGES (Annecy)
Tel.: +33 4 50 65 62 87
Fax: +33 4 50 65 61 30
robot.sales@staubli.com

STÄUBLI