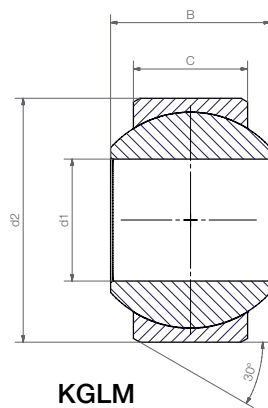
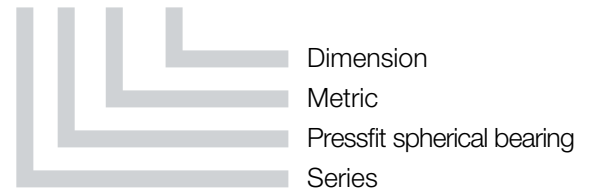


Pressfit spherical bearing: KGLM



Order key

KGLM-02



- Compensation of misalignment and edge loads
- Corrosion-resistant
- High vibration-dampening capacity
- Suitable for rotating, oscillating and linear movements



Material:

Housing: **igumid G** ► page 983

Spherical ball: **iglidur® W300** ► page 671

Technical Data and Dimensions [mm]

| Part number | Max. static compressive strength | | Max. torque through ball [Nm] | d1 E10 | d2 | B | C | Max. pivot angle | Weight [g] |
|-------------|----------------------------------|------------|-------------------------------|--------|----|----|------|------------------|------------|
| | radial [N] | axial* [N] | | | | | | | |
| KGLM-02 | 300 | 60 | 1 | 2 | 8 | 4 | 3.0 | 32° | 0.1 |
| KGLM-03 | 550 | 200 | 2 | 3 | 10 | 6 | 4.5 | 32° | 0.5 |
| KGLM-05 | 1,300 | 500 | 5 | 5 | 13 | 8 | 6.0 | 30° | 1.0 |
| KGLM-06 | 1,800 | 650 | 10 | 6 | 16 | 9 | 6.5 | 29° | 1.6 |
| KGLM-08 | 2,700 | 1,200 | 12 | 8 | 19 | 12 | 9.0 | 25° | 2.9 |
| KGLM-10 | 4,000 | 1,400 | 20 | 10 | 22 | 14 | 10.5 | 25° | 4.4 |
| KGLM-12 | 5,400 | 1,500 | 30 | 12 | 26 | 16 | 12.0 | 25° | 7.0 |
| KGLM-14 | 6,000 | 2,500 | 35 | 14 | 28 | 19 | 13.5 | 23° | 9.1 |
| KGLM-16 | 8,000 | 3,000 | 40 | 16 | 32 | 21 | 15.0 | 23° | 12.8 |
| KGLM-18 | 9,000 | 4,000 | 45 | 18 | 35 | 23 | 16.5 | 23° | 16.6 |
| KGLM-20 | 10,000 | 5,000 | 55 | 20 | 40 | 25 | 18.0 | 23° | 24.4 |
| KGLM-22 | 11,700 | 6,500 | 60 | 22 | 42 | 28 | 20.0 | 22° | 28.5 |
| KGLM-25 | 13,600 | 7,500 | 65 | 25 | 47 | 31 | 22.0 | 22° | 39.3 |
| KGLM-30 | 20,000 | 9,000 | 70 | 30 | 55 | 37 | 25.0 | 22° | 62.6 |

* The maximum static axial load is determined in a remote location hole.



delivery available
time from stock

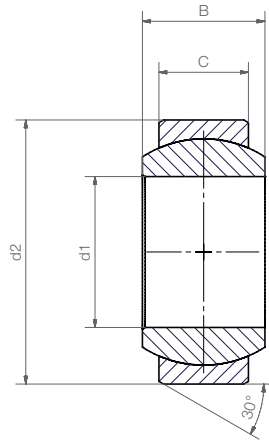


prices price list online
www.igus.eu/eu/kglm



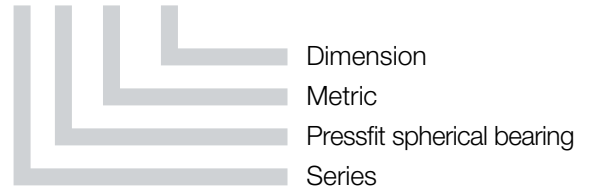
order part number
example KGLM-02

Pressfit spherical bearing: EGLM



Order key

EGLM-04



- Compensation of misalignment errors and edge loads
- Corrosion-resistant
- High vibration-dampening capacity
- Suitable for rotating, oscillating and linear movements



Material:

Housing: **igumid G** ► page 983

Spherical ball: **iglidur® W300** ► page 671

Technical Data and Dimensions [mm]

| Part number | Max. static compressive strength | | Max. torque through ball [Nm] | d1 E10 | d2 | B | C | Max. pivot angle | Weight [g] |
|-------------|----------------------------------|---------------|----------------------------------|-----------|----|----|------|------------------|---------------|
| | radial [N] | axial* [N] | | | | | | | |
| EGLM-04 | 600 | 50 | 1 | 4 | 12 | 5 | 3.0 | 37° | 0.4 |
| EGLM-05 | 1,000 | 130 | 2 | 5 | 14 | 6 | 4.0 | 33° | 0.8 |
| EGLM-06 | 1,200 | 150 | 2.5 | 6 | 14 | 6 | 4.0 | 27° | 0.9 |
| EGLM-08 | 1,800 | 175 | 7 | 8 | 16 | 8 | 5.0 | 24° | 1.2 |
| EGLM-10 | 2,500 | 400 | 14 | 10 | 19 | 9 | 6.0 | 24° | 1.9 |
| EGLM-12 | 3,800 | 650 | 25 | 12 | 22 | 10 | 7.0 | 21° | 2.8 |
| EGLM-15 | 5,500 | 1,000 | 30 | 15 | 26 | 12 | 9.0 | 21° | 6.9 |
| EGLM-16 | 6,000 | 1,150 | 32 | 16 | 28 | 13 | 9.5 | 21° | 9.0 |
| EGLM-17 | 6,300 | 1,200 | 35 | 17 | 30 | 14 | 10.0 | 21° | 10.6 |
| EGLM-20 | 9,000 | 1,400 | 40 | 20 | 35 | 16 | 12.0 | 18° | 16.3 |
| EGLM-25 | 14,000 | 2,900 | 55 | 25 | 42 | 20 | 16.0 | 16° | 29.0 |
| EGLM-30 | 17,000 | 4,000 | 70 | 30 | 47 | 22 | 18.0 | 13° | 37.4 |

* The maximum static axial load is determined in a remote location hole.



delivery available
time from stock



prices price list online
www.igus.eu/eu/eglm



order part number
example EGLM-04