

ECLIPSE 7

Hitec's most sophisticated computer aircraft radio is the Eclipse 7 FM. Featuring 7 channels and a 7 model memory. The Eclipse has specific programming for fixed wing, glow, gas or electric planes, helicopters and sailplanes. Plus with the "Selectable Shift" function, you can operate any modern FM receiver and when used with the optional Spectra 72MHz frequency synthesizer module you can transmit on any of the fifty, 72MHz channels with the twist of a dial.



ECLIPSE 7

7 Channel FM Aircraft Computer Radio

Features

- 7 Channel FM, PCM Signal
- 7 Model Memory
- Heli Mode
- Fixed Wing Mode
- Glider Mode
- Optional Spectra Frequency Synthesizer
- Module Flight Modes Compatible
- Digital Trims
- 7 Character Model Naming
- Three Conditional Mixes per Model Memory
- Five Programmable Mixes (Two in Heli Mode)
- Model Copy
- Sub Trims
- Shift Selectable
- In-Flight Timer and Alarm
- Low Tx Battery Warning
- End Point Adjustments for All Channels
- All Channel Servo Reversing
- Dual Rates on Channel 1, 2 and 4
- Exponential Rates on Channels 1, 2 and 4
- Data Reset to Defaults
- Trainer Jack and Switch
- Throttle Cut Switch
- Auto Engine Cut Switch
- Engine Hold
- Pre-Set Mixes, Aileron - Rudder, Elevon, V-Tail, Flaperon/Spoileron, Crow, Camber/Reflex

Stock # 171721 Airplane Version

Includes : 4 HS-422 Servos, 8 Ch. Supreme RX., 600mAh RX. Battery, Standard Switch.

Stock # 171723 Aircraft Spectra Version

Includes : 4 HS-425BB Servos, Spectra Module, 8 Ch. Super Slim RX., 600mAh RX. Battery, Heavy Duty Switch

Stock # 171725 Heli Version

Includes : 5 HS-425BB Servos, 8 Ch. Supreme RX., 1000mAh RX Battery, Heavy Duty Switch

Stock # 171724 TX only w/Spectra module

Includes : Eclipse Transmitter With Spectra Synthesizer Module, TX Ni-Cd and Overnight Wall Charger

Acro :

- Landing Mix
- Flap Trim Adjust
- Elevator-Flap Mix
- Aileron-Rudder Mix
- Elevon Mix
- V-Tail Mix
- Flaperon Mix
- Flaperon Differential

Helicopter :

- Throttle Cut
- Rudder-Throttle Mix
- 2 Idle-up, 1 Throttle Hold
- 5 Point Throttle Curve
- 5 Point Pitch Curve
- Gyro Gain Adjust
- Revolution Mix
- Hovering Pitch Knob
- Hovering Throttle Knob
- Engine Lock Switch
- Normal Swash Mode and 120 and 180 Degree CCPM Modes.

Glider :

- (2 servo Wing Mode)
- Camber Mix
- Flaperon Differential.
- V-Tail Mix
- Elevator-Flap Mix
- Aileron-Rudder Mix
- Flap-Aileron Coupling
- Flap-Elevator Coupling
- Flap-Aileron Trim (4 Servo Wing Mode)
- Same as Above Plus:
- Crow Mix
- Aileron-Dual Flap Trim
- Aileron-Dual Flap Coupling
- Dual Flap-Aileron Trim
- Aileron-Flap Coupling



ECLIPSE 7 QPCM

Now available in a PCM version.

For those that demand that extra level of performance and reliability, Hitec's radio R&D department has created a "super fast response" PCM technology we called "Q-PCM". This new "Quick" PCM signal sets a new industry standard with an incredible 0.17 second response rate, nearly 50% faster than any other PCM technology!

Quick Response QPCM With Shock Absorber Technology

Combine the New Q-PCM Eclipse Transmitter With Our New Affordable HPD-07RH 7 Channel Q-PCM Receiver Equipped with HITEC Shock Absorber Technology.

Stock # 172721 Airplane Version

Includes : 4 HS-422 Servos, 7 Ch. HPD-07RH RX, 600mAh RX, Battery, Standard Switch.

Stock # 172725 Heli Version

Includes : 5 HS-425BB Servos, 7 Ch. HPD-07RH RX, 1000mAh RX Battery, Heavy Duty Switch

Stock # 172724 PCM Spectra Version

Includes : PCM TX, w/Spectra Synthesizer Module, 7 Ch. HPD-07RH RX., TX Ni-Cd, and Overnight Wall Charger



SPECTRA 72

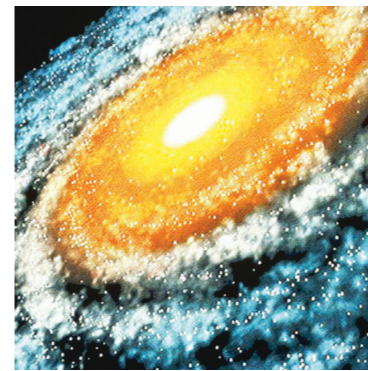
72MHz Transmitter Frequency Synthesizer Module

Application
Designed for Use in the Hitec Eclipse Radio Transmitter.

Specifications
Modulation
FM and PCM
Frequency Band 72MHz
Stock# 24472 Spectra 72MHz

LASER 4 & 6

Check out the powerful Laser 4 and 6 analog sport radio systems from Hitec. These reliable, value packed radios were created to replace the now discontinued Focus 4 and 6 series radios. As you may expect, we loaded these new transmitters with great features like Elevon and V-tail mixing built right into the radio, and as a bonus, the Laser 6 comes with aileron and elevator dual rates plus much more! For all the glider and micro airplane fans, we are offering two different versions of the Laser 4 systems just for you!



LASER 4

Four Channel FM Aircraft/Surface Radio

Features

- 4 Channel, FM Transmitter
- All Channel Servo Reversing
- ATV on Ch. 1 and 2
- Ch. 1 and 2 "Elevon" Mixing Option
- Ch. 2 and 4 "V-tail" Mixing Option
- 5 LED Power Meter
- Trainer Switch
- New Ergonomic Case
- Low Battery Alarm

Available Versions

(North American Market)

Stock # 156721 Standard System

Includes : Supreme 8 Ch. Receiver, 4 HS-322 Servos, 600mAh Transmitter Ni-Cd, 600mAh Receiver Battery, A/C Overnight Wall Charger.

Stock # 156751 Aircraft System

Includes : Supreme 8 Ch. Dual Conversion 75 MHz Receiver, 2 HS-322 Servos, 600mAh Transmitter Battery and Overnight Charger.

Stock # 156722 Glider System

Includes : Micro "555" 5 Ch. Micro Receiver, 3 HS-81Micro Servos, 600mAh Transmitter Ni-Cd, 270mAh Receiver Battery, A/C Overnight Wall Charger.

Stock # 156723 Micro System

Includes : Feather 4 Ch. Micro Receiver, 2 HS-55 Micro Servos, 600mAh Transmitter Ni-Cd, Dry AAA Receiver Battery Box, A/C Overnight Wall Charger.

LASER 6

Six Channel FM Aircraft/Surface Radio

Features

- 6 Channel, FM Transmitter
- All Channel Servo Reversing
- Ch. 1 Aileron and Ch.
- 2 Elevator Dual Rate Switches
- ATV on Ch. 1 and 2
- EPA on Ch. 3
- Ch. 1 and 2 "Elevon" Mixing Option
- Ch. 2 and 4 "V-tail" Mixing Option
- Analog Transmitter Power Meter
- Trainer Switch
- New Ergonomic Case

Stock# 155751 Aircraft System

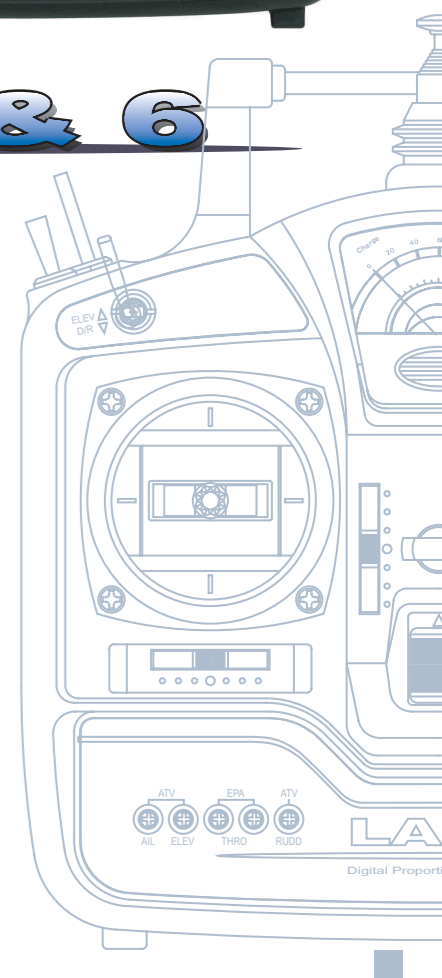
Includes: Supreme 8 Ch. Dual Conversion 75MHz Receiver, 2 HS-322 Servos, 600mAh Transmitter Battery and Overnight Charger.

Stock # 157721 System Components

Supreme 8 Ch. Receiver, 4 HS-422 Servos, 600mAh Transmitter Ni-Cd, 600mAh Receiver Battery, A/C Overnight Wall Charger.



LASER 4 & 6



FLASH SYSTEM X

Looking to get the most out of a radio system without spending a pile of money? Then take a close look at the Flash 4 and 5 System X computer radio systems. With both radios featuring a five model memory, digital trims and the "AutoSave" function, no other system can touch the Flash radios for quality and value. Want a little more? The Flash 5 has 3 special flight modes for sport, electric or sailplane as well as most of the popular mixes. Both the Flash 4 and 5 are offered as glider systems with smaller servos and receivers.



FLASH 5 SYSTEM X 5 Channel FM Aircraft Computer Radio

- Features**
- 5 Channel FM
 - 5 Model Memory
 - Digital Trims
 - Mode I or Mode II Capable
 - In-Flight Timer and Alarm
 - Low Battery Warning
 - End Point Adjustments for All Channels
 - All Channel Servo Reversing
 - Exponential Rates on Channels 1, 2 And 4
 - Data Reset to Defaults
 - Trainer Jack
 - Auto Engine Cut Switch
 - 3 Pre-Set Mixes, Aileron - Rudder, Elevon, V-Tail
 - Flaperon Capable
 - 3 Flight Modes, Acrobat, Glider and Glider/Acro
 - Channel 5 Retract Switch
 - Camber Adjustment
 - Dual Rates on Channel 1 And 2
 - Proportional Flaps on Throttle Stick
 - Electric Motor Controller 3 Position Switch
 - Channel 1 and 5 are Used for Two Ailerons servos
 - Allowing for the Use of Very Creative Flaperon, Spoileron and Camber or Reflex Mixes

Stock #155722 Flash 5 SXG Glider version
Includes : Micro "555" 5 Channel Micro Receiver, 3 HS-81 Micro Servos, 600 mAh Transmitter and 270mAh Receiver Ni-Cd, Charger, Switch Harness

Available Versions (North American Market)
Stock #155721 Flash 5 SX
Includes : Supreme 8 channel Receiver, 4 HS-422 Deluxe Servos, 600mAh. Transmitter and Receiver Ni-Cd, Charger, Switch Harness with Charge Jack and Frequency Flags



FLASH 4 SYSTEM X 4 Channel FM Aircraft Computer Radio

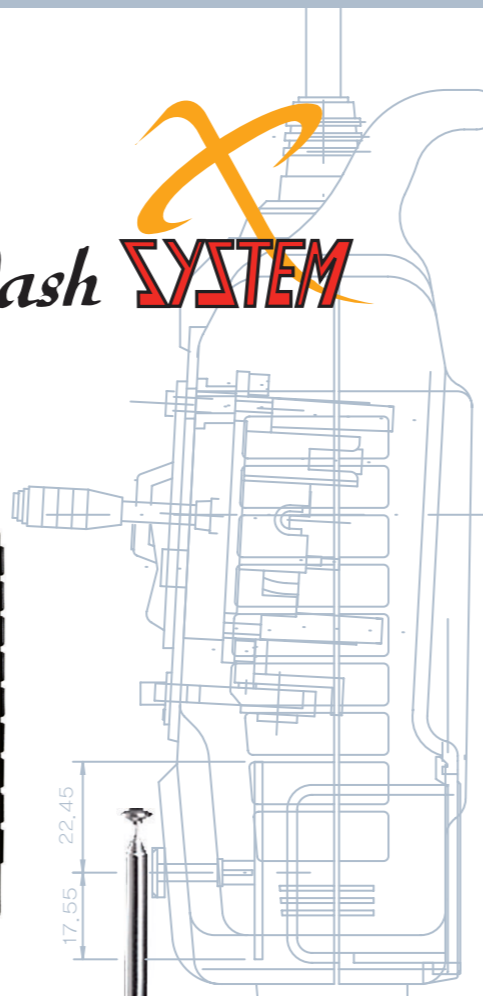
- Features**
- 4 Channel FM
 - 5 Model Memory
 - Digital Trims
 - Mode I or Mode II Capable
 - End Point Adjustments For All Channels
 - All Channel Servo Reversing
 - Exponential Rates On Channels 1, 2 and 4
 - Auto Engine Cut Switch
 - 3 Pre-Set Mixes, Aileron
 - Rudder, Elevon, V-Tail
 - Trainer Jack
 - In-Flight Timer and Alarm
 - Low Battery Warning

Available Versions (for North American Market)
Stock #154721 Flash 4 SX
Includes : Supreme 8 Channel Receiver, 3 HS-322 Servos, 600 mAh Transmitter and Receiver Ni-Cd, Charger, Switch Harness with Charge Jack and Frequency Flags

Stock #154722 Flash 4 SXG Glider version
Includes : Micro "555" 5 Channel Micro Receiver, 2 HS-81 Micro Servos, 600 mAh Transmitter and 270 mAh Receiver Ni-Cd, Charger, Switch Harness with Charge Jack and Frequency Flags

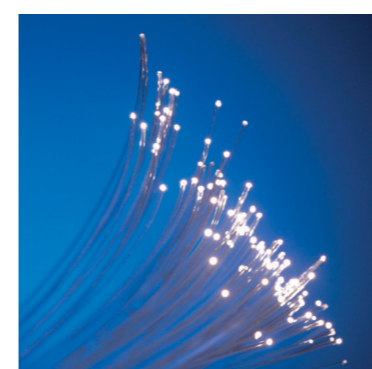


Flash SYSTEM



NEON SS FM

Evolution in action, our NEON 3 SS FM Single Stick radio system is the latest brainchild from Hitec. This ergonomic design offers 3 channel single stick operation in an upgradeable package. Fly it standard, "out of the box" with all the basic features, you need, (plus Ch. 1 and 2 mixing!), then add upgrade packages that you want. Ch. 1 and 2 Dual Rates, Ch. 1,2 and 3 ATV's, a Trainer Function, and even a three-position 4th Ch. switch!



NEON SS FM Single Stick 3 Channel, (upgradeable to 4 channel) FM Aircraft Radio

- Features**
- Single Stick 3 Channel, (upgradeable to 4 channel)
 - FM Proportional System
 - Dual Axis Precision Gimbal
 - Adjustable Gimbal stick length
 - Adjustable Gimbal Stick Tension
 - 3 LED battery status indicators
 - Charging Jack for Optional internal Nicad battery
 - Servo Reversing for all Channels
 - Elevon or V-tail Mixing Function
 - Proportional 3rd. Channel Slide Switch
 - Channel 1 and 2 Trim Levers

Neon SS FM Deluxe version
Stock #148721
Includes : (3 Channel FM Single Stick) Electron 6 FM Receiver, 2 HS-81 Micro Servos, Tx Ni-Cd Batteries, CG-25 Overnight Wall Charge

Neon SS FM Micro version
Stock #148722
Includes : (3 Channel FM Single Stick) HFS-04MG Receiver, 2 HS-55 Feather Servos, "dry" transmitter, "AAA" Receiver Battery Box.

NEON SS FM



"Upgradeable" with ATV's, Trainer system, a 4th. Channel, and Dual Rates!

- Options**
- Channel 1,2 and 3 ATV Function, (part # 54302)
 - Trainer Plug and Switch, (part # 54303)
 - Channel 1 and 2 Dual Rate Function (part # 54304) (Must use optional part # 54302, ATV function in Addition to This Option)
 - Channel 4 Three Position Switch, (part # 54305)



FOCUS 3 SS

You told us we "hit a home run" when Hitec released the Focus Single Stick radio series. We listened to what you said you wanted and now we offer more versions than ever before of these popular, dependable, and economic single stick radio systems. Offering you a choice of AM or FM systems with standard sized servos, micro, and sub-micro packages available.

FOCUS 3 SS FM Single Stick FM 3 Channel Aircraft Radio

- Features**
- Ergonomically Designed 3 Channel FM Transmitter
 - Proportional Third Channel
 - Channel 1 And 2 Electronic Internal Mixing
 - Channel 1 And 2 Servo Reversing
 - Transmitter Ni-Cd and Overnight Wall Charger

Stock # 147723 Focus 3 SS FM 72 MHz
Includes : HAS-04MG RX, 2 HS-81 Micro Servos, Dry system, No Ni-Cd's

Stock # 147725 Focus 3 SS FM 72 MHz
Includes : Feather RX, 2 HS-55 Feather Servos, Dry system, No Ni-Cd's

Stock # 147726 Focus 3 SS FM 72 MHz
Includes : HAS-04MG RX, 2 HS-55 Feather Servos, Dry System, No Ni-Cd's



FOCUS 3 SS AM Single Stick AM 3 Channel Aircraft Radio

- Features**
- Ergonomically Designed 3 Channel AM Transmitter
 - Proportional Third Channel
 - Channel 1 and 2 Electronic Internal Mixing
 - Channel 1 and 2 Servo Reversing
 - Charge Jack for Optional Ni-Cd and Charger

Available Versions (for North American Market)
Stock # 146721 Focus 3 SS AM 72 MHz
Includes : HAS-03MB Mini Receiver, 2 HS-322 Servos, Micro switch Harness, AAA battery box and Frequency Flags.

Stock # 146722 Focus 3 SS AM Mini 72MHz
Includes : HAS-03MB Mini Receiver, 2 HS-81 Micro Servos, Micro Switch Harness with Charge Jack, AAA Battery box, and Frequency Flags.

AGGRESSOR CRX

Hitec has a big winner on its hands with the release of the Aggressor CRX 3-channel, FM computer pistol grip radio systems. Featuring a 20 model memory, high definition graphic LCD display, digital trims, push button third channel for shifting, and an easy to program user interface with all the bells and whistles anyone could ever need. The CRX is sure to be a hit with racers and back yard bashers. The CRX is a true top level competition grade system while still keeping the sport user in mind; it is a great addition to the new Aggressor line of pistol grip radios from Hitec. The CRX is available in several different versions, all of which come with transmitter Ni-Cd and our standard overnight wall charger. Get it with the Spectra Frequency Synthesizer Module and Novak's Synthesized Receiver (Limited time only), and never buy another crystal again! Already have a few FM receivers? Get the transmitter only w/Spectra and save some money.



AGGRESSOR CRX 3 Channel Computer Radio System

Features

- Ergonomically Designed 3 Channel Pistol Grip FM Computer Radio.
- High Definition/Multi-Pixel LCD Display.
- Dual Rate Steering.
- Brake ATL Switch.
- Brake Lever Travel Limiter.
- Steering Wheel Tension Adjustment.
- Trim Center Audible Verification.
- Third Channel "Shifting" Button.
- Transmitter Low Battery Alarm
- Third Channel "Linear" Digital Trim.
- Interchangeable Assorted Color Rubber Grip Pads in Two Sizes.
- Foam Steering Wheel for Comfortable Control.
- Transmitter Charging Jack for Rechargeable Batteries.
- Digital Trims.
- RF Indicator Light.
- Two-Speed Menu Scrolling
- Total Transmitter "On" Time Timer

Programmable Features :

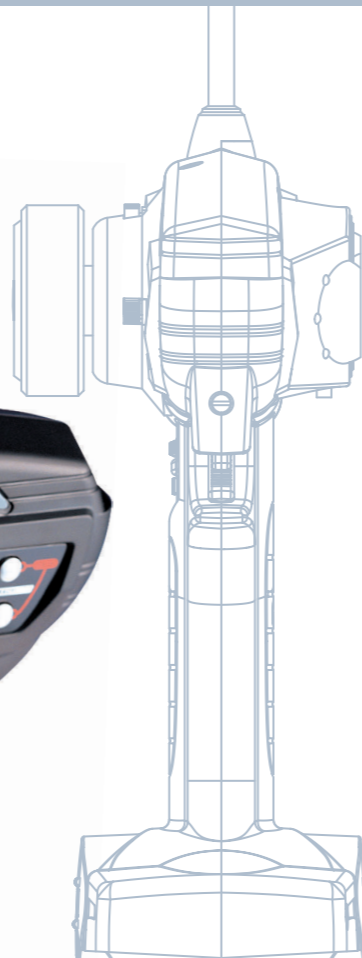
- Model Naming. (6 Characters)
- Model Select. (20 Models)
- Sub-Trims.
- Ch #3 Switch Set. (Shift, Linear)
- EPA. (End Point Adjustment)
- Steering and Throttle Exponential Travel.
- ABS. (Anti-Lock Braking)
- Steering to Aux/Throttle to Aux Mixing.
- Timer. (Up/Down)
- Servo Reversing.
- Model Copy.
- Model Reset. (Factory Default)

Stock# 127271
27MHz Tx., DCX Receiver,
one HS-325HB servo, Tx. Ni-Cd and charger

Stock# 127751
75MHz Tx., DCX Receiver,
one HS-325HB servo, Tx. Ni-Cd and charger

Stock# 127752
75MHz Transmitter only w/Spectra,

Stock# 127755
75MHz Transmitter w/Spectra,
and Novak Synthesized RX
(Limited Time Only)



SPECTRA 75 75MHz Transmitter Frequency Synthesizer Module

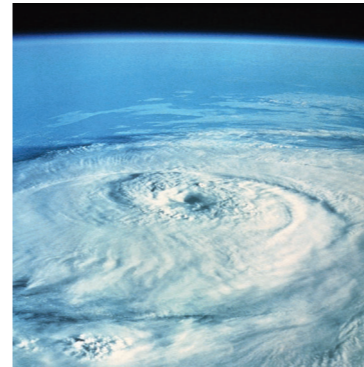
Application :
Designed for Use in the
Hitec FM Transmitter

Specifications :
Modulation FM only
Frequency Band 75MHz only
Stock# 24475 Spectra 75

3 CHANNEL COMPUTER RADIO CONTROL SYSTEM
AGGRESSOR CRX

AGGRESSOR FM & AM

Hitec's all-new Aggressor 2 AM & Aggressor 3 FM have "raised the bar" by offering the first customizable radios with interchangeable components in different colors and designs. Change the rubber "Grip Pad" and "Tuning Cover" for a custom fit and look; many colors and designs are available to set you apart from the crowd. We loaded the radios with features like : Dual Rate Steering, servo reversing, external charging jack, and rock solid reception. The Aggressor FM 3 ch. also comes standard with a push button third channel that can be used for shifting! In addition, the FM is also equipped with throttle and steering End Point Adjustments (EPAs), for easier set-up and maximum performance of your electric or nitro powered vehicles.



AGGRESSOR FM 3 Channel Pistol Grip Radio System

Features

- Ergonomically Designed
3 Channel Pistol Grip FM Radio
- Servo Reversing (Channels 1 & 2)
- End Point Adjustments (EPA) for Steering and Throttle
- Dual Rate Steering (Adjustable on the Fly)
- 3rd Channel Push Button for Shifting
- 3 L.E.D. Battery Status Indicators
- Audible Power Indicator
- Removable Crystals for Easy Channel Changing (If this is Legal in your Country)
- Interchangeable Rubber Grip Pads in two Sizes
- Assorted Colored Grip Pads and Tuning Covers for Personalizing your Radio
- Foam Steering Wheel for Comfortable Control
- Charging Jack for Optional Rechargeable Batteries
- 3-CH FM Micro Receiver
- Standard HS-325HB Servo
- Receiver Dry Battery Holder

Stock # : 126751
Aggressor FM 3ch. Pistol Grip 75MHz,
HFS-03MM Receiver and Dry Battery Holder,
1 HS-325HB

Stock # : 126271
Aggressor FM 3ch. Pistol Grip 27MHz,
HFS-03MM Receiver and Dry Battery Holder,
1 HS-325HB



AGGRESSOR AM 2 Channel Pistol Grip Radio System

Features

- Ergonomically Designed
2 channel Pistol Grip AM Radio
- Servo Reversing (All channels)
- Dual Rate Steering (Adjustable on the Fly)
- 3 L.E.D. Battery Status Indicators
- Removable Crystals for Easy Channel Changing (If this is legal in your Country)
- Interchangeable Rubber Grip Pads to two Sizes
- Assorted Colored Grip Pads and Tuning Covers for Personalizing your Radio
- Foam steering wheel for Comfortable Control
- Charging Jack for Optional Rechargeable Batteries
- BEC Receiver
- Standard HS-311 Servo
- Receiver Dry Battery Holder

Aggressor Accessories



- 54306** Tuning Cover for Aggressor (Paintable Clear, Red, Blue)
- 54307** Tuning Cover for Aggressor (Camouflage)
- 54308** Tuning Cover for Aggressor (Silver Carbon)



- 54309** Grip Pad for Aggressor thin (Red, Blue, Black)
- 54310** Grip Pad for Aggressor thick (Red, Blue, Black)

Stock# 125751
Aggressor AM 2 ch. Pistol Grip 75MHz,
HAS-02MB Receiver, 2 HS-311

Stock# 125752
Aggressor AM 2 ch. Pistol Grip 75MHz,
HAS-02MB Receiver, 1 HS-311, EZX-R ESC

Stock# 125753
Aggressor AM 2 ch. Pistol Grip 75MHz,
HAS-02MB Receiver, 1 HS-311

Stock# 125271
Aggressor AM 2 ch. Pistol Grip 27MHz,
HAS-02MB Receiver, 2 HS-311

RANGER 2N

Featuring an ergonomic case design, the Ranger 2N AM is the most comfortable two stick, two channel radio we have ever made. The Ranger 2N is a "dry" system and is available in both 27 and 75MHz packages.



RANGER 2N 2 Stick 2 Channel AM Surface Radio System

- Features**
- Two Channel AM Two Stick Transmitter
 - Servo Reversing
 - External Charging Jack
 - Removable Interchangeable Crystals
 - Optional Ratchet For Throttle
 - Steering And Throttle Trims
 - Recessed On/Off Switch
 - Comfortable Metal Handle

Stock# 135271 Ranger 2N 27MHz
Stock# 135751 Ranger 2N 75MHz
Includes : HP2RNB Receiver,
2 HS-311 Standard Servos,
Switch Harness and AA Battery Box.

RANGER 3 FM

The New Ranger 3 FM improves on the previous version by replacing the 3rd channel knob with a proportional slider and adding ATVs to channels 1 and 2

RANGER II N



RANGER III FM



RANGER 3 FM 2 Stick 3 Channel AM Surface Radio System

- Ch. 1 and 2 ATVs
- 3 Channel FM Two Stick Transmitter
- Proportional 3rd Channel
- Servo Reversing
- Steering and Throttle Trims
- External Charging Jack for Optional Ni-Cd
- Analog Voltage Meter
- Removable Interchangeable Crystals
- Optional Ratchet for Throttle
- Recessed On/Off Switch

Stock # 132752 Ranger 3 FM 75MHz
Includes : HFS-03MM Receiver,
2 HS-311 Standard Servos,
Battery Box and Switch Harness.

LYNX SPORT

Reengineered for a better "look and feel", the Lynx Sport transmitter now features a superior trigger, foam covered wheel and a modest case re-design. All these changes make the Lynx Sport the perfect choice for entry level drivers.

LYNX SPORT 2 Channel AM Pistol Grip Radio System

- Features**
- Two Channel AM Pistol Grip Transmitter
 - Servo Reversing
 - LED Battery Indicator Lights w/Flashing Low Battery Indicator
 - Removable Interchangeable Crystals
 - Steering and Throttle Trims
 - External Charging Jack
 - Recessed On/Off Switch

Available Versions (North American Market)
Stock # 124271 Lynx Sport 27MHz Standard
Stock # 124751 Lynx Sport 75MHz Standard
Includes: HP2RNB Receiver, 2 HS-311 Sport Servos,
Switch Harness and AA Battery Box.

Stock # 124754 Lynx Sport 75MHz (Single Servo)
Includes : HP2RNB Receiver, 1 HS-311 Sport Servos,
Switch Harness and AA Battery Box.

Stock # 124753 Lynx Sport 75MHz with ESC
Includes : HP2RNB Receiver, 1 HS-311 Sport Servos,
EZXR-2 way ESC.



40 Different Hitec Servos To Choose from

HITEC MODEL	HITEC PART #	DESCRIPTION	TORQUE 4.8/6.0V	SPEED 4.8/6.0V	BEARING	SIZE LxWxH	WEIGHT OZ.	ACCESSORY PART# G=GEAR C=CASE								
HS-50	31050	FEATHER	8oz	.09 SEC	NONE	0.8"x0.4"x0.9"	0.21	G#56355 / C#56354	•	•						
HS-55	31055	FEATHER	15oz/18oz	.17/.14 SEC	NONE	0.9"x0.5"x0.9"	0.28	G#55001 / C#55401	•	•	•					
HS-56HB	31056	FEATHER	14oz/16oz	.12/.10 SEC	TOP BB	0.9"x0.5"x0.9"	0.37	G#55007 / C#55412	•	•	•					
HS-75BB	31075	RETRACT	92oz/114oz	.45/.34 SEC	TOP BB	1.7"x0.9"x1.0"	1.23	G#56343 / C#56344	•	•						
HS-77BB	31077	LOW PROFILE	61oz/76oz	.18/.14 SEC	TOP BB	1.7"x0.9"x1.0"	1.23	G#56370 / C#56344	•	•						
HS-81	31081	MICRO	36oz/42oz	.11/.09 SEC	NONE	1.2"x0.5"x1.2"	0.58	G#56403 / C#56404	•	•	•					•
HS-81MG	31081	METAL GEAR	36oz/42oz	.11/.09 SEC	NONE	1.2"x0.5"x1.2"	0.67	G#56386 / C#56404	•	•	•					•
HS-85BB	31085	MIGHTY MICRO	42oz/49oz	.16/.14 SEC	TOP BB	1.1"x0.5"x1.2"	0.67	G#56365 / C#56366	•	•	•					•
HS-85MG	32085	METAL GEAR	42oz/49oz	.16/.14 SEC	TOP BB	1.1"x0.5"x1.2"	0.77	G#56388 / C#56366	•	•	•					•
HS-125MG	32125	WING THIN	42oz/49oz	.17/.13 SEC	DUAL BB	1.2"x0.4"x1.3"	0.84	G#56301 / C#56408	•	•						•
HS-225BB	31225	MIGHTY MINI	54oz/67oz	.14/.11 SEC	TOP BB	1.3"x0.7"x1.2"	0.95	G#56341 / C#56342	•	•	•					•
HS-225MG	32225	METAL GEAR	54oz/67oz	.14/.11 SEC	TOP BB	1.3"x0.7"x1.2"	0.95	G#56396 / C#56342	•	•	•					•
HS-311	31311	STANDARD	42oz/49oz	.19/.15 SEC	NYLON	1.6"x0.8"x1.4"	1.51	G#55002 / C#55403	•	•	•					•
HS-322HD	33322	STANDARD DELUXE	42oz/49oz	.19/.15 SEC	NYLON	1.6"x0.8"x1.4"	1.51	G#55003 / C#55403	•	•	•					•
HS-325HB	33325	STANDARD DELUXE	42oz/51oz	.19/.15 SEC	TOP BB	1.6"x0.8"x1.4"	1.51	G#55003 / C#55403	•	•	•	•				•
HS-422	31422	DELUXE	46oz/57oz	.21/.16 SEC	OILITE	1.6"x0.8"x1.4"	1.60	G#56334 / C#56339	•	•	•	•				•
HS-425BB	31425	DELUXE	46oz/57oz	.21/.16 SEC	DUAL BB	1.6"x0.8"x1.4"	1.60	G#55004 / C#55409	•	•	•	•				•
HS-475HB	33475	STANDARD DELUXE	61oz/76oz	.23/.18 SEC	TOP BB	1.6"x0.8"x1.4"	1.41	G#55004 / C#55409	•	•	•	•				•
HS-525BB	31525	HIGH SPEED	46oz/57oz	.17/.13 SEC	TOP BB	1.5"x0.8"x1.4"	1.56	G#56345 / C#56347	•	•	•	•				•
HS-525MG	32525	METAL GEAR	46oz/57oz	.17/.13 SEC	OILITE	1.5"x0.8"x1.4"	1.78	G#56394 / C#56347	•	•	•	•				•
HS-545BB	31545	HIGH TORQUE	61oz/76oz	.22/.17 SEC	TOP BB	1.6"x0.8"x1.4"	1.56	G#56346 / C#56347	•	•	•	•				•
HS-625MG	32625	METAL GEAR	76oz/94oz	.18/.13 SEC	DUAL BB	1.6"x0.8"x1.5"	1.94	G#56302 / C#56320	•	•	•	•				•
HS-635HB	33635	HIGH TORQUE	69oz/83oz	.18/.15 SEC	DUAL BB	1.6"x0.8"x1.5"	1.83	G#55006 / C#55411	•	•	•	•				•
HS-645MG	32645	METAL GEAR	107oz/133oz	.24/.20 SEC	DUAL BB	1.6"x0.8"x1.5"	1.94	G#56303 / C#55402	•	•	•	•				•
HS-700BB	31700	1/4 SCALE	139oz/174oz	.22/.17 SEC	TOP BB	2.3"x1.1"x 2.0"	3.59	G#56390 / C#56391	•							•
HS-705MG	32705	METAL GEAR	161oz/201oz	.26/.20 SEC	TOP BB	2.3"x1.1"x 2.0"	4.72	G#56398 / C#56391	•							•
HS-715BB	31715	SAIL ARM	161oz/201oz	.25/.19 SEC	TOP BB	2.3"x1.1"x 2.0"	3.59	G#56360 / C#56391								•
HS-725BB	31725	SAIL WINCH	161oz/201oz	1.5/1.3 SEC	TOP BB	2.3"x1.1"x 2.0"	3.88	G#56348 / C#56349								•
HS-755BB	33755	QUARTER SCALE	153oz/183oz	.28/.23 SEC	DUAL BB	2.3"x1.1"x 2.0"	3.88	G#55008 / C#55413	•							•
HS-805BB	31805	MEGA 1/4 SCALE	275oz/343oz	.19/.14 SEC	DUAL BB	2.6"x1.2"x2.3"	5.36	G#56350 / C#56352								•
HS-815BB	31815	METAL SAIL	275oz/343oz	.45/.38 SEC	DUAL BB	2.6"x1.2"x2.3"	5.60	G#56350 / C#56352								•
HS-925MG	32925	HIGH SPEED	85oz/107oz	.11/.08 SEC	DUAL BB	1.6"x0.8"x1.5"	1.97	G#56382 / C#56351	•	•	•	•				•
HS-945MG	32945	HIGH TORQUE	122oz/153oz	.16/.12 SEC	DUAL BB	1.6"x0.8"x1.5"	1.97	G#56383 / C#56351	•	•	•	•				•
HS-5125MG	35125	DIGITAL WING	42oz/49oz	.17/.13 SEC	DUAL BB	1.2"x0.4"x1.3"	0.84	G#55301 / C#55408	•	•						•
HS-5245MG	35245	DIGITAL MINI	61oz/76oz	.15/.12 SEC	DUAL BB	1.3"x0.7"x1.2"	1.12	G#56396 / C#56342	•	•	•					•
HS-5475HB	35475	DIGITAL HIGH TORQUE	61oz/76oz	.23/.18 SEC	DUAL BB	1.5"x0.8"x1.4"	1.41	G#55004 / C#55409	•	•	•	•				•
HS-5625MG	35625	DIGITAL HIGH SPEED	110oz/131oz	.17/.14 SEC	DUAL BB	1.6"x0.8"x1.5"	2.11	G#55302 / C#56402	•	•	•	•				•
HS-5645MG	35645	DIGITAL HIGH TORQUE	143oz/168oz	.23/.18 SEC	DUAL BB	1.6"x0.8"x1.5"	2.11	G#56303 / C#56351	•	•	•	•				•
HS-5735MG	35735	DIGITAL 1/4 SCALE	222oz/264oz	.16/.13 SEC	DUAL BB	2.3"x1.1"x2.0"	5.14	G#56304 / C#56406	•							•
HS-5925MG	35925	HIGH SPEED CORELESS	103oz/128oz	.10/.08 SEC	DUAL BB	1.6"x0.8"x1.5"	1.97	G#56382 / C#56351	•	•	•	•				•
HS-5945MG	35945	HIGH TORQUE CORELESS	153oz/181oz	.16/.13 SEC	DUAL BB	1.6"x0.8"x1.5"	1.97	G#56383 / C#56351	•	•	•	•				•
HS-5975HB	35975	DIGITAL HEAVY DUTY	91oz/109oz	.13/.10 SEC	DUAL BB	1.6"x0.8"x1.5"	1.76	G#55005 / C#55410	•	•	•					•

= CONNECTOR VERSION - S/Z & J

Servos

32125 HS-125MG WING THIN

(0.84oz/24g)
-Dual ball bearing
41.66oz.in(3.0kg.cm), 0.17sec/60°
1.18 x 0.39 x 1.33"
(30 x 10 x 34mm)



31050 HS-50 FEATHER

(0.21oz/6.1g)
8.33oz.in(0.6kg.cm), 0.09sec/60°
0.82 x 0.44 x 0.86"
(20.9 x 11.4 x 22mm)



31055 HS-55 FEATHER

(0.28oz/8g)
15.27oz.in(1.1kg.cm), 0.17sec/60°
0.89 x 0.45 x 0.94"
(22.8 x 11.6 x 24mm)



31056 HS-56HB FEATHER

(0.37oz/10.7g)
16.66oz.in(1.2kg.cm), 0.10sec/60°
0.88 x 0.45 x 0.94"
(22.6 x 11.6 x 24mm)
-Top ball bearing
-Karbonite Gears



31081 HS-81 MICRO

(0.58oz/16.6g)
32081 HS-81MG MICRO
(0.67oz/19g)
-Metal gears
36.10oz.in(2.6kg.cm),
0.11sec/60°
1.17 x 0.47 x 1.16"
(29.8 x 12 x 29.6mm)



31085 HS-85BB+ MIGHTY MICRO

(0.67oz/19.2g)
-Top ball bearing
-Glider servo mount enclosed

32085 HS-85MG+ MIGHTY MICRO

(0.77oz/21.9g)
-HS-85BB+ with metal gears
41.66oz.in(3.0kg.cm),
0.16sec/60°
1.14 x 0.51 x 1.18"
(29 x 13 x 30mm)



31225 HS-225BB MIGHTY MINI

(0.95oz/27g)

32225 HS-225MG MIGHTY MINI

(1.09oz/31g)
-HS-225BB with metal gear
-Top ball bearing
54.15oz.in(3.9kg.cm),
0.14sec/60°
1.27 x 0.66 x 1.22"
(32.4 x 16.8 x 31mm)



31311 HS-311 STANDARD

(1.51oz/43g)
-Speed : 0.19sec/60°
Long life potentiometer
-42oz/3kg.cm
-3 Pole motor
1.57 x 0.78 x 1.43"
(40 x 20 x 36.5mm)



33322 HS-322HD STANDARD DELUXE

(1.51oz/43g)
-Top resin bushing

33325 HS-325HB STANDARD DELUXE

(1.51oz/43g)
-Top ball bearing
-Speed : 0.19sec/60°
-Long life potentiometer
-KARBONITE Gears
-41.66oz/3kg.cm
-1.57 x 0.78 x 1.43"
(40 x 20 x 36.5mm)



31075 HS-75BB RETRACT

91.65oz.in(6.6kg.cm), 0.45sec/60°

31077 HS-77BB LOW PROFILE

61.1oz.in(4.4kg.cm), 0.18sec/60°
-Top ball bearing
-One metal gear
-1.23oz/35g
1.73 x 0.90 x 0.98"
(44 x 23 x 25mm)



All measured at 4.8voltage /  = Common Specifications / * Servos shown actual size *

Servos

33475 HS-475HB STANDARD DELUXE

(1.41oz/40g)
-Top ball bearing
-KARBONITE Gears
-61.10oz(4.4kg.cm)
-1.52 x 0.77 x 1.41"
(38.8 x 19.8 x 36mm)

31422 HS-422 DELUXE

(1.6oz/45.5g)
-Dual oilite bearings

31425 HS-425BB DELUXE

(1.6oz/45.5g)
-Dual Ball Bearings
45.82oz(3.3kg.cm), 0.21sec/60°
1.59 x 0.77 x 1.44"
(40.6 x 19.8 x 36.6mm)



32625 HS-625MG HIGH SPEED

76.37oz.in(5.5kg.cm), 0.18sec/60°

32645 HS-645MG HIGH TORQUE

106.93oz.in(7.7kg.cm), 0.24sec/60°

-Metal gear
-MP gear
-Dual Ball Bearings
1.94oz/55.2g
1.59 x 0.77 x 1.48"
(40.6 x 19.8 x 37.8mm)

32635 HS-635HB HIGH TORQUE

83.32oz.in(6kg.cm), 0.15sec/60°
-KARBONITE Gears
-Ball bearing
1.83oz/52.1g
1.56 x 0.77 x 1.52"
(39.8 x 19.8 x 38.8mm)



32705 HS-705MG QUARTER SCALE METAL

(4.72oz/134g), 161.09oz.in(11.6kg.cm), 0.26sec/60°

31715 HS-715BB SAIL ARM

(3.59oz/102g)
-Sail Arm Included
-161.09oz.in(11.6kg.cm), 0.25sec/60°

31725 HS-725BB SAIL WINCH

(3.88oz/110g)
-Heavy Duty Nylon Drum Included
-Full Rotation : 3 1/2 turns.
161.09oz.in(11.6kg.cm), 1.5sec/360°
-Top ball bearings,
2.32 x 1.14 x 2.04"
(59 x 29 x 52mm)

31755 HS-755HB QUARTER SCALE

(3.88oz/110g)
-KARBONITE Gears
-183.31oz.in(13.2kg.cm), 0.23sec/60°
2.32 x 1.14 x 1.96"
(59 x 29 x 50mm)



31525 HS-525BB HIGH SPEED

(1.56oz/44.5g)

32525 HS-525MG HIGH SPEED

(1.78oz/50.6g)
45.82oz.in(3.3kg.cm), 0.17sec/60°
-HS-525BB with Metal Gear

31545 HS-545BB HIGH TORQUE

(1.56oz/44.5g)
61.1oz.in(4.4kg.cm), 0.22sec/60°
-5 pole motor
-Top Ball Bearing
1.56 x 0.77 x 1.41"
(39.8 x 19.8 x 36mm)



32925 HS-925MG HIGH SPEED

-Speed : 0.08sec/60° (at 6.0V)
84.71oz.in(6.1kg.cm), 0.11sec/60°

32945 HS-945MG HIGH TORQUE

-Torque : 11kg.cm(at 6.0V)
122.2oz.in(8.8kg.cm), 0.16sec/60°
-High Torque Servo
-Coreless Motor
-MP Gear
1.97oz/56g
1.55 x 0.78 x 1.48"
(39.4 x 20 x 37.8mm)



31805 HS-805BB+ MEGA QUARTER SCALE

31815 HS-815BB MEGA SAIL

-Heavy Duty Sail Arm
-Dual ball bearings
-15tooth spline
274.96oz.in(19.8kg.cm), 0.19sec/60°
(5.36oz/152g)
2.59 x 1.18 x 2.26"
(66 x 30 x 57.6mm)

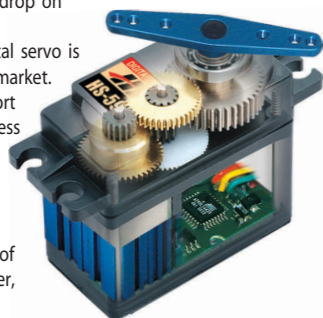


All measured at 4.8voltage /  = Common Specifications / * Servos shown actual size *

Digital Servos

A BRAVE NEW DIGITAL WORLD

Hitec now offers 9 digital servos for almost every application you can dream of. If you've been waiting for the price to drop on digital technology, wait no more! Hitec's HS-5475HB Economy Sport Digital servo is the lowest priced digital servo on the market. Both our new HS-5475HB Economy Sport servo and the HS-5975HB Deluxe Coreless motor servo feature KARBONITE Gears for a long service life and Hitec's new glass filled heavy duty servo arms. Check out the full line of Hitec digital servo products and get the advantage of programmability, extreme holding power, quality and low price.



35125 HS-5125MG DIGITAL WING

- (0.84oz/24g)
- Digital wing servo
- Programmable
- Metal output Horn
- Slim size (10mm)
- 41.66oz/3.0kg.cm
- 3 Pole motor
- Speed : 0.17sec/60°
- Four metal gears & One MP gear
- 1.18 x 0.39 x 1.33"
- (30 x 10 x 34mm)



35245 HS-5245MG MINI

- (1.12oz/32g)
- Digital mighty mini
- Programmable
- Dual ball bearing
- 61.10oz.in(4.4kg.cm), 0.15sec/60°
- 1.27 x 0.66 x 1.21"
- (32.4 x 16.8 x 30.8mm)



35735 HS-5735MG QUARTER SCALE

- (5.14oz/146g)
- 222.19oz.in(16kg.cm), 0.16sec/60°
- Digital & MOS FET Amp
- Programmable
- Metal output Horn
- Extra Heat Sink for cooling Motor
- High Standing Torque
- Dual ball bearings
- Three Metal Gears, & One MP gear
- 2.32 x 1.14 x 2.04"
- (59 x 29 x 52mm)



35625 HS-5625MG HIGH SPEED

- 109.7oz.in(7.9kg.cm), 0.17sec/60°

35645 HS-5645MG HIGH TORQUE

- 143.03oz.in(10.3kg.cm), 0.23sec/60°
- 2.11oz/60g
- 1.59 x 0.77 x 1.48"
- (40.6 x 19.8 x 37.8mm)
- Digital & MOS FET Amp
- Programmable
- Dual ball bearings
- Three metal gears, & One MP gear

35475 HS-5475HB HIGH TORQUE

- KARBONITE Gears
- 61.10oz.in(4.4kg.cm), 0.23sec/60°
- 1.41oz/40g
- 1.52 x 0.77 x 1.41"
- (38.8 x 19.8 x 36mm)



35925 HS-5925MG HIGH SPEED CORELESS

- 102.76oz.in(7.4kg.cm), 0.1sec/60°

35945 HS-5945MG HIGH TORQUE CORELESS

- 152.75oz.in(11kg.cm), 0.16sec/60°
- 1.97oz/56g, 1.55 x 0.78 x 1.48"
- (39.4 x 20 x 37.8mm)
- Digital & MOS FET Amp
- Programmable -Coreless motor
- Metal output Horn
- Long life potentiometer
- Dual ball bearings
- Three metal gears, & One MP gear

35975 HS-5975HB KARBONITE, CORELESS

- KARBONITE Gears
- 91.65oz.in(6.6kg.cm), 0.13sec/60°
- 1.76oz/50g, 1.57 x 0.78 x 1.45"
- (40 x 20 x 37mm)



All measured at 4.8voltage / = Common Specifications / * Servos shown actual size *

Servo Tester

HFP-10 SERVO TESTER/ DIGITAL PROGRAMMER

Now available is the Hitec Digital Servo Programmer and Servo Tester. Offered in a sturdy aluminum case, the programmer will program the Hitec digital servos and test any brand of analog servo.

Applications

For Programming Hitec digital servos and the testing of any brand of analog servo product.

Features

- Internal 4.8V rechargeable nicad battery
- Low battery warning
- LCD screen
- Easy operation
- Sturdy aluminum case

The HFP-10 is also an analog servo tester featuring;

Manual and Automatic testing procedures. Transmitter Pulse width measurement. Receiver Voltage measurement.

Stock#s # 44410

Programmable functions of the Hitec digital servos are;

Factory Default Reset / Dead Band Width Adjustment / Direction of Rotation / Speed of Rotation
Fail Safe on - off / End Point / Neutral Point / Fail Safe Point Preset



Flight Packs

Hitec offers our most popular receivers and servos in a flight pack combination for your next project.



FEATHER FLIGHT PACK

For indoor and limited range models

- Feather 4 channel FM receiver
- Two HS-55 sub-micro servos
- Micro switch harness
- Negative Shift Version #20270**
- For use with Hitec and Fut. transmitters
- Positive Shift Version #20370**
- For use with JR and Air't transmitters



MICRO PACK

For sailplanes, electrics and glow powered aircraft

- Micro 555 five channel FM receiver
- Three HS-81 Micro servos
- 270mAh receiver battery pack
- Deluxe Switch harness w/charge jack
- Negative Shift Version #28570**
- For use with Hitec and Fut. transmitters
- Positive Shift Version #28670**
- For use with JR and Air't transmitters



UNIVERSAL PACK

For most larger sailplanes, glow and gas planes

- Shift Select RCD 3800 seven channel FM receiver
- Four HS-425BB deluxe ball bearing servos
- 600mAh receiver battery pack
- Deluxe Switch harness w/charge jack
- Version #23870**
- For use with all FM transmitters

Aircraft Receivers

Electron 6 FM Receiver

Six Channel FM Aircraft Receiver
Type : 6 Channel Dual Conversion FM

	Standard	Metric
Size LxWxH	1.79" x 0.88" x 0.59"	45.5x22.5x15.0mm
Weight	0.64oz	18grams
without X-tal	0.6oz	17grams
without case	0.4oz	13grams

Stock #'s
Compatibility 72MHz
Hitec/Fut 25272
Airt-Z/JR 25372



HFS-04MG Receiver

Four Channel FM Aircraft Receiver
Type : 4 Channel Single Conversion FM

	Standard	Metric
Size LxWxH	1.47" x 0.98" x 0.62"	37.5x25x16mm
Weight	0.65oz	18.50grams

Stock #'s 24772



Feather Receiver

Ultra Light Four Channel FM Aircraft Receiver
Type : 4 Channel Single Conversion FM

	Standard	Metric
Size LxWxH	1.3" x 0.8" x 0.4"	33x20x10mm
Weight	0.26oz	7.8grams

Stock #'s
Compatibility 72MHz
Hitec/Fut 20272
Airt-Z/JR 20372



Supreme Super Slim

Eight Channel FM Aircraft Receiver
Type : 7 or 8 Channel Dual Conversion
72MHz FM / PPM Receiver

	Standard	Metric
Size LxWxH	2.3" x 1.4" x 0.8"	49x28x17mm
Weight	0.81oz	23grams

Stock #'s 72MHz
Compatibility FM
Hitec(U-hole) 29572
JR/Airt-Z(U-hole) 29672
Futaba "J" 29272



Micro 555

Five Channel FM Micro Receiver
Type : 5 Channel Dual Conversion 72MHz
FM / PPM Receiver

	Standard	Metric
Size LxWxH	1.6" x 1.1" x 0.7"	40x28x18mm
Weight	0.75oz w/case(0.55oz w/o)	21grams

Compatibility Stock #
Hitec(U-hole) 28572
Fut. "J" 28272
Airt-A(Old style) 28472
JR/Airt-Z 28672



HAS-03MB

Three Channel AM Receiver
Type : 3 Channel, Single Conversion AM

	Standard	Metric
Size LxWxH	1.9" x 1.2" x 0.7"	48x30x18mm
Weight	0.81oz	23grams

Stock #'s	27MHz	72MHz
	26427	26472



Supreme Shift Select RCD3800

Seven Channel FM Receiver
Type : 7 Channel Dual Conversion Shift
selectable 72MHz FM / PPM
Receiver

	Standard	Metric
Size LxWxH	2.3" x 1.4" x 0.8"	56.8x35.2x21.5
Weight	1.34oz	38grams

Stock #	72 MHz
	23872

Supreme Series

Eight Channel FM Receiver
Type : 7 or 8 Channel Dual Conversion
72MHz FM / PPM Receiver

	Standard	Metric
Size LxWxH	2.3" x 1.4" x 0.8"	56.8x35.2x21.5
Weight	1.34oz	38grams



Supreme Aircraft Receivers

Stock #'s	72MHz
Compatibility	FM
Hitec (U-hole)	23572
Futaba "J"	23272
JR/Airt-Z (U-hole)	23672

Supreme Surface Receiver

Stock #'s	75MHz
Compatibility	FM
Hitec (U-hole)	23575

HPD-07RH QPCM

Seven Channel QPCM Receiver
Type : 7 Channel Dual Conversion
72MHz FM / QPCM Receiver

	Standard	Metric
Size LxWxH	2.1" x 1.4" x 0.9"	54.4x35x20
Weight	1.27oz	36.1grams

Stock #'s	72 MHz
	21372



Quick Response QPCM
with Shock Absorber technology

Shock Absorber technology
Dual Conversion
Q-PCM

Surface Receivers & Speed controllers

HFS-03MM

3 Channel FM Micro Surface Receiver
Type: 3 Channel Single Conversion FM

	Standard	Metric
Size LxWxH	1.5" x 1.0" x 0.6"	37.5x25x16mm
Weight	0.56 oz	15.87 grams

Compatibility	27MHz	75MHz
Universal	24627	24675



HIS-03MK

3 Channel FM Micro Surface Receiver
Type: 3 Channel Single Conversion FM

	Standard	Metric
Size LxWxH	1.5" x 1.0" x 0.6"	38.8x26x16.5mm
Weight	0.6 oz	17 grams

Compatibility	27MHz	75MHz
Universal	24927	24975



HAS-02MB

Two Channel AM Receiver
Type: 2 Channel, Single Conversion AM

	Standard	Metric
Size LxWxH	1.9" x 1.2" x 0.7"	48 x 30 x 18mm
Weight	0.81 oz	23 grams

Stock #'s	27MHz	72MHz	75MHz
	26227	26272	26275



DCX

3 Channel Dual Conversion FM Receiver
Type: 3 Channel Dual Conversion FM

	Standard	Metric
Size LxWxH	1.6" x 1.1" x 0.7"	40x28x18mm
Weight	0.75oz	21grams

Compatibility	27MHz	75MHz
Hitec/Fut (U-hole)	24227	24275
JR/KO/Airt-Z (U-hole)	24327	24375



HP-2RNB

2 Channel AM Receiver
Type: 2 Channel, Single Conversion AM

	Standard	Metric
Size LxWxH	1.9" x 0.2" x 0.7"	53x35x19mm
Weight	1.0oz	28grams

Compatibility	27MHz	72MHz
Universal	26327	26375



- Receivers show actual size

HFX

High Frequency Electronic Speed Control

Features.
- Power MOSFET's Provide Low Power Loss.
- High Frequency Output (1830Hz) TEMPFET Protection
- Prevents Overheating Damage Adjustable Current Limiting
(Traction Control) 20-120 Amps One Push Easy Set-up
- 12 Gauge Silver Wire for low Power loss Stock # 41810

Applications
Sport To Competition Level, Cars, Boats, Trucks And Buggies



HFX-R

High Frequency Electronic Speed Control

The new high performance HFX-R speed control offers proportional forward and reverse. Its smooth linear response, easy one touch set-up and economic pricing makes it perfect for any R/C car, buggy or truck.

Features.
- One Push Easy set-up Power MOSFET's provide low Power loss
- TEMPFET Protection Prevents Overheating Damage 12 Gauge
- Silver Wire for Low Resistance

Applications
Sport and Competition level Cars, Trucks, Buggies and Boats



EZX-R, EZX-R pro

High Frequency Electronic Speed Control

Features.
- Microprocessor Controlled
- Low Resistance
- MOSFET Drive Two Way or One Way
- Built in on/off Switch
- One Push Set-up Thermal Protection

Applications
Sport To Competition Level, Cars, Boats, Trucks And Buggies



Specifications	Standard	Metric
Size	1.6" x 1.2" x 0.7"	41.6 x 29.6 x 18.5mm
Weight	1.9 oz	53 grams
Input Voltage	4-10 cells	
Current Limiting	20 - 120 Amps	
B.E.C.	6 Volts / 5 Amps	
PWM Frequency	1830 Hz	
Forward Current	300 Amps	
Braking Current	100 Amps	
Internal Resistance	0.001167 Ohm	
Low Operating Voltage	2.7 Volts	
Motor Limit	No lower than 10 turns (recommended)	
Stock #	41810	

Specifications	Standard	Metric
Size	1.6" x 1.3" x 1.1"	41 x 34 x 28mm
Weight	2oz	56 grams
Operating Voltage Range	7.2 to 8.4V (6-7CELL)	
PWM Freq	1900hz	
Forward Current	162A	
Breaking Current	80A	
B.E.C	5V at 1A	
Internal Resistance	0.0040hm Forward, 0.008ohm Reverse	
Motor Limit	10 turn Forward, 12 turn Reverse	
Stock #	41820	

Specifications	EZX-R Pro	EZX-R
Size	1.58" x 1.34" x 0.63"	1.58" x 1.34" x 0.63"
Weight	2oz	2oz
Input Operating Voltage Range	7.2V-8.4V (6-7CELL)	7.2V-8.4V (6-7CELL)
Forward Peak Current	140A	65A
Forward Continuous Current	96A	46A
Backward Peak Current	70A	32A
Backward Continuous Current	48A	23A
Bec Voltage & Current	5V +/-0.2V 800mA	5V +/-0.2V 800mA
Half Cut Off Temperature	105 C +/-10 C	105 C +/-10 C
Actual resistance	0.012mΩ	0.032mΩ
Drive frequency	1.9KHz	1.9KHz
Motor Limit	17 Turn	23 Turn
Stock #	41840	41830

- Receivers show actual size

Transmitter and Receiver Crystal Application Chart

	TRANSMITTERS	MODULATION	CHANNELS	72 MHz TX CRYSTAL PART #	27 MHz TX CRYSTAL PART #	75 MHz TX CRYSTAL PART #	RECEIVER CHOICES
SURFACE	AGGRESSOR AM	AM	2		67427xx	67475xx	HP-2RNB, HAS-02MB, SHREDDER
	RANGER 2N	AM	2		67427xx	67475xx	
	LYNX AM	AM	2		67427xx	67475xx	
	LYNX SPORT	AM	2		67427xx	67475xx	
	AGGRESSOR FM	FM	3		67127xx	67175xx	HFS-03MC, DCX, HFS-03MM, HFS-04MI
	RANGER 3 FM	FM	3		67127xx	67175xx	
	LYNX FM	FM	2		67127xx	67175xx	
	LASER 4	FM	4			67475xx	
	LASER 6	FM	6			67475xx	
	AGGRESSOR CRX	FM	3		67127xx	67175xx	
LYNX 3D	FM	3		67127xx	67175xx		
MODULE #				21327	21375		
SPECTRA MODULE #				24475			
AIRCRAFT	FOCUS SS AM	AM	3	67472xx			HAS-03MB
	NEON	FM	3	Hitec Service Part Only			ELECTRON, HFS-04MG, FEATHER, SUPREME SERIES, "555", SUPER SLIM
	FOCUS SS FM	FM	3	Hitec Service Part Only			
	LASER 4	FM	4	Hitec Service Part Only			
	LASER 6	FM	6	Hitec Service Part Only			
	FLASH 4 SX	FM	4	Hitec Service Part Only			
	FLASH 5 SX	FM	5	Hitec Service Part Only			
	ECLIPSE 7	FM & PCM	7				All the above and HPD-07RH
MODULE #			21272				
SPECTRA MODULE #			24472				

XX = CHANNEL NUMBER

RECEIVERS	MODULATION	SINGLE/DUAL CONVERSION	CHANNELS	72MHz RECEIVER CRYSTA PART #	72MHz RECEIVER PART #	27MHz RECEIVER CRYSTA PART #	27MHz RECEIVER PART #	75MHz RECEIVER CRYSTA PART #	75MHz RECEIVER PART #
HP-2RNB	AM	Singel	2			66427xx	26327	66475xx	26375
HAS-02MB	AM	Singel	2	66472xx	26272	66427xx	26227	66475xx	26275
HAS-03MB	AM	Singel	3	66472xx	26472	66427xx	26427		
HFS-03MM	FM	Singel	3			66427xx	24627	66875xx	24675
HFS-03MK	FM	Singel	3			66427xx	24927	66875xx	24975
HFS-04MG	FM	Singel	4	66472xx	24872				
FEATHER	FM	Singel	4						
HITEC/FUT				66472xx	20272				
AIRT-Z/JR				66472xx	20372				
DCX FOR ALL 27MHz TX	FM	Dual	3			66427xx	24227		
HITEC/FUT								66775xx	24275
AIRT-Z/JR								66775xx	24375
555	FM	Dual	5						
HITEC					28572				
FUTABA					28272				
AIRT-Z/JR					28672				
ELECTRON	FM	Dual	6						
JR/AIRT "Z"				66772xx	25372				
HITEC/FUT "U HOLE"				66772xx	25272				
SUPREME	FM	Dual	8						
FUTABA				66772xx	23272				
HITEC				66772xx	23572				
AIRT-Z/JR				66772xx	23672			66775xx	23575
SHIFT SELECT RCD 3800	FM	Dual	7	66772xx	23872				
SUPER SLIM	FM	Dual	8						
FUTABA				66772xx	29272				
HITEC				66772xx	29572				
AIRT-Z/JR				66772xx	29672				
HPD-07RH	PCM	Dual	7	66772xx	27272				

XX = CHANNEL NUMBER

CHARGERS & BATTERYS

CG-335 pro Multi Purpose NiMh Charger w/Digital Display



- Features
- DC to DC charging with Booster Circuit
 - Delta Peak Cut off with Automatic Trickle
 - MOS-FET Drive Control with Pulse Charging
 - Initial Cutoff Error Override
 - Low Battery Input Voltage
 - Input Battery Polarity Protection
 - Output Battery Polarity Protection
 - Charging Port Short Protection
 - Cutoff method : Delta Peak Cutoff (Primary & Glow Plug Port Only)
 - Maximum Charge Time : 65-Minute Safety Cutoff

Applications 4-24 cell 270 - 3000mAh Ni-Cd and Ni-MH Battery Packs Specifications

Wide Input Voltage Range	9 - 13.8 Volt
Input Battery Minimum Capacity	10A
Charging Amperage	.5 - 5
Glow (1 cell)	1.1A
Upper Port	4-24cell (0.5A - 5.5A)
Secondary Port	250mAh (.25A) constant rate
Stock #	43335

CG-340 Ni-Cd & Ni-MH Peak Charger

The CG-340 field charger from Hitec will charge most popular Ni-cds and NiMh battery packs from a 12V D/C power source. Easy and simple to use, the CG-340 can charge up to 16 cells and features an adjustable charge rate of 0.2 - 3 amps for 6-16 cell Ni-Cd packs and 0.2 - 1.5 amps for 4-5 cell Ni-Cd and 4-16 cell Ni-MH packs. These stats make the CG-340 the perfect choice to charge all receiver, transmitter and small motor packs



- Features
- Peak Charges Ni-Cd and Ni-MH Batteries
 - Input and Output Battery Polarity Protection
 - Features the Exclusive Hitec "No False Peaks" Circuitry
 - Shuts Down Automatically After 65 Minutes
 - Automatic Ni-cd trickle charge
 - User Adjustable charging rates
 - Handy Built-in Wire Holder
 - MOS-FET Drive Control with Pulse Charging
 - Delta Peak Cutoff

Application 4-16 cell 50-3000mAh Ni-Cd and Ni-MH Battery Packs Specifications

Wide Input Voltage range	9 - 13.9 Volt
Input Battery Minimum Capacity	4A
Charging Amperage	.2 - 1.5 / .2 - 3.5
Charges	4-16 Ni-Cd and Ni-MH Cells
Stock #	43340

CG-25A, CG-25J, CG-22A range AC Overnight Charger



- AC Overnight Charger
- Charger for Receiver & Transmitter Ni-Cd Battery
- Charging Capacity : 50mAh
- Stock : CG-25A 110V range : # 43025
- CG-25J 110V range : # 43025J
- CG-22A 220V range : # 43022

POWER MATE II Receiver Battery Checker



- Dual Voltage Range : 4.8v/6.0v (4-5cell)
- Reading Range : 0-120% (Empty to Full)
- Stock : # 44110

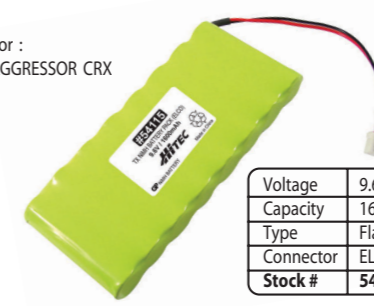
TX NiMh Battery pack

For :
LASER Series
ECLIPSE, PRISM,
FLASH, LYNX FM,
FOCUS SS



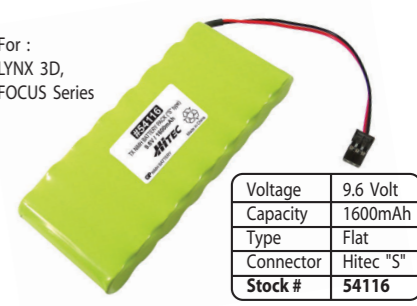
Voltage	9.6 Volt
Capacity	1600mAh
Type	Cylinder
Connector	ELCO
Stock #	54114

For :
AGGRESSOR CRX



Voltage	9.6 Volt
Capacity	1600mAh
Type	Flat
Connector	ELCO
Stock #	54115

For :
LYNX 3D,
FOCUS Series



Voltage	9.6 Volt
Capacity	1600mAh
Type	Flat
Connector	Hitec "S"
Stock #	54116

RX NiMh Battery pack



Voltage	4.8 Volt
Capacity	1600mAh
Type	Flat
Connector	Hitec "S"
Stock #	54117



Voltage	4.8 Volt
Capacity	750mAh
Type	Flat
Connector	Hitec "S"
Stock #	54118

ACCESSORIES CHART

Servo Gear Set(Resin)

- 55001 : HS-55 Gear Set
- 55002 : HS-322/325BB Gear Set
- 55006 : HS-635HB KARBONITE Gear Set
- 55007 : HS-56HB KARBONITE Gear Set
- 55008 : HS-755HB KARBONITE Gear Set
- 56312 : HS-60 Gear Set
- 56319 : HS-605BB Gear Set
- 56324 : HS-80/HS-101 Gear Set (Servo discontinued)
- 56325 : HS-300/HS-300BB/HS-303 Gear Set
- 56334 : HS-422/HS-425 Gear Set
- 56341 : HS-205BB/225BB Gear Set
- 56343 : HS-75BB Gear Set
- 56345 : HS-525BB Gear Set
- 56346 : HS-545BB Gear Set
- 56348 : HS-725BB Gear Set
- 56350 : HS-805BB+/HS-815BB Gear Set
- 56355 : HS-50 Gear Set
- 56360 : HS-715BB Gear Set
- 56365 : HS-85BB+ Gear Set
- 56370 : HS-77BB Gear Set
- 56390 : HS-700BB Gear Set
- 56403 : HS-81 Gear Set

Servo Gear Set(Metal)

- 55301 : HS-5125MG/125MG Gear Set
- 55302 : HS-625MG/5625MG Metal Gear Set(MP First Gear)
- 55303 : HS-645MG/5645MG Metal Gear Set(MP First Gear)
- 55304 : HS-5735MG Metal Gear Set (MP First Gear)
- 56382 : HS-925MG/5925MG Metal Gear(MP First Gear)
- 56383 : HS-945MG/5945MG Metal Gear(MP First Gear)
- 56386 : HS-81MG Metal Gear Set(All Metal)
- 56388 : HS-85MG+ Metal Gear Set
- 56392 : HS-80/80MG/HS-101/101MG Metal Gear Set (Servo discontinued)
- 56393 : HS-235AG Metal Gear Set (Servo discontinued)
- 56394 : HS-525MG Metal Gear Set
- 56396 : HS-205 / 225MG / 5245MG Metal Gear Set
- 56397 : HS-605MG/605BB Metal Gear Set
- 56398 : HS-700BB/705MG Metal Gear Set
- 56399 : HS-615MG/605BB Metal Gear Set

Servo Case Set

- 55401 : HS-55 Case Set(Black)
- 55402 : HS-625MG/645MG/5625MG/5645MG Case Set
- 55403 : HS-322/325BB Case Set
- 55404 : HS-50 Case Set(Blue)
- 55405 : HS-55 Case Set(Blue)
- 55406 : HS-5735MG Case Set without Aluminum Heat Sink
- 55408 : HS-5125MG/125MG Case Set
- 56313 : HS-60 Case Set
- 56320 : HS-605BB/605MG/615MG Case Set
- 56323 : HS-80 & HS-80MG Case Set (Servo discontinued)
- 56328 : HS-101 & 101MG Case Set (Servo discontinued)
- 56329 : HS-300/HS-300BB Case Set
- 56339 : HS-422/425BB Case Set 56342 : HS-205BB/205MG/225BB/235AG/5245MG Case Set

- 56344 : HS-75BB/77BB Case Set
- 56347 : HS-525/545BB Case Set
- 56349 : HS-725BB Case Set
- 56351 : HS-925MG/945MG/5925MG/5945MG Case Set
- 56352 : HS-805BB+/HS-815BB Case Set
- 56354 : HS-50 Case Set(Black)
- 56366 : HS-85BB+/HS-85MG+ Case Set
- 56391 : HS-700BB/705MG/715BB Case Set
- 56401 : HS-303 Case Set
- 56404 : HS-81/81MG Case Set
- 55411 : HS-635HB Case Set
- 55412 : HS-56HB Case Set
- 55413 : HS-755HB Case Set

Servo Horn & Hardware Set

- 55701 : Standard Half Metal Horn
- 55702 : Standard Metal Horn
- 55706 : HS-125MG Horn set

- 55707 : HS-5125MG Horn set
- 55708 : HS-50/55 horn set
- 56308 : HS-303 Horn & Hardware Set
- 56314 : Winch HS-725BB Servo Drum & Hardware
- 56315 : Regular Servo Horn Set for HS-77/225/300/303/322/325BB/422/525/545/605/625/645
- 56316 : Giant Horn Set for HS-700/705
- 56317 : Regular Servo Horn & Hardware for HS-225/300/303/422/525/545/605/625/645
- 56318 : Mega Horn & Hardware Set for HS-805BB+
- 56326 : Micro Horn Set for HS-60/81/85

- 56327 : Micro Horn & Hardware Set for HS-60/81/85
 - 56336 : Regular Servo Hardware for HS-225/300/303/322/325BB/422/525/545/605/625/645
 - 56340 : Giant HS-700BB/705MG/715BB Servo Hardware
 - 56402 : Super Star Horn Set(2pcs)
- The Other Servo Accessories
- 56305 : Five Servo Tray
 - 56306 : Vertical Mount Set(4pcs) for HS-60/81/85BB+
 - 56307 : Servo Wing Mount Set for HS-80/81, FP-5143, NES-341, 94501
 - 56361 : Sail Arm(1pc) for HS-715BB
 - 56362 : Sail Arm(1pc) for HS-815BB
 - 58471 : Servo Ball Bearing(1pc)
 - 58473 : Big Ball Bearing(1pcs) for HS-805BB+/815BB

TX & RX Antenna

- 54001 : Feather Receiver Green Antenna for Air Usage with Bobbin
- 54002 : Regular Receiver Red Antenna for Surface Usage
- 58001 : Antenna for Ranger AM & FM
- 58002 : Antenna for Challenger 250 & 260
- 58004 : Antenna for Focus / Flash / Focus SS Series
- 58005 : Antenna for Prism Series
- 58006 : Antenna for Lynx 3D
- 58007 : Antenna for New Lynx AM / Lynx Sport / Ranger 2Z
- 58011 : Regular Receiver Antenna for Air Usage

TX & RX Nicad Battery Pack

- 54111 : Receiver Ni-Cd Pack 600mAh (Cylinder Type)
- 54112 : Receiver Ni-Cd Pack 270mAh (Cylinder Type)
- 57401 : Receiver Ni-Cd Pack 600mAh (Flat Type)
- 57402 : Receiver Ni-Cd Pack 1000mAh "Sanyo"(Flat Type)
- 57403 : Receiver Ni-Cd Pack 270mAh "Sanyo"(Flat Type)
- 57404 : Receiver Ni-Cd Pack 1000mAh (Flat Type)
- 57405 : Receiver Ni-Cd Pack 270mAh (Flat Type)
- 58206 : TX Ni-Cd Pack(8Cell) for Lynx 3D / Focus 4 & 6 Series(Flat Type)
- 58207 : TX Ni-Cd Pack(8Cell) for Prism / Flash / Focus SS(Cylinder Type)
- 54409 : Neon dry Battery box

Miscellaneous TX Accessories

- 54301 : Direct Servo Control Connector for Lynx 3D
- 56381 : Control Stick Extension
- 58310 : One Way Trainer Cord
- 58311 : Neck Strap
- 58312 : Throttle Spring Defeat with Screw for Ranger 2S / Challenger 250
- 58314 : Throttle Spring Defeat with Screw for Focus 3 SS / Ranger 2Z

TX & RX Battery Holder & Switch Harness

- 54401 : Switch Harness with RX Charger Cord(used with DSC Cord)
- 54402 : Mini Size(AAA Size) Receiver Battery Box S-01
- 54403 : Micro Switch Harness
- 54404 : Micro Switch Harness & AAA Size Battery Box(#54402+#54403)
- 54405 : Lynx 3D Transmitter Dry Battery Pack
- 54406 : Lynx 3D Transmitter Ni-cd Battery Pack without Ni-Cd Battery
- 54407 : Heavy Duty High Channel Switch Harness with RX Charger Cord Gold Pin and Heavy Duty Wire(#54407 J : Fut)
- 55409 : TX Battery Holder for Neon SS FM
- 57201 : Low Channel Receiver Battery Box
- 57202 : Low Channel Switch Harness
- 57203 : Switch Harness & Battery Box(#57201+#57202)
- 57204 : BEC System Switch
- 57215 : High Channel Switch Harness with RX Charger Cord (A=Air't, J=Fut, S=Hitec S / JR / New Air't)

- 57216 : High Channel Receiver Battery Box
- 57217 : Switch Harness & Battery Box(#57215+#57216)
- 58101 : Prism / Flash / Lynx / Focus SS TX Battery Holder

TX & RX Charger Cord

- 56371 : TX Charger Cord
- 56375 : Banana Jack with TX Charger Cord
- 57372 : RX Charger Cord(500mm)
- 57376 : Banana Jack with RX Charger Cord
- 57377 : TX & RX Charger Cord with Banana Jack (#56375+#57376)
- 57416 : Adaptor to charge 2ch RX Ni-Cd
- 58307 : Adaptor to charge Prism / Flash TX Ni-Cd

Regular Aileron Extension & Male / Female Servo Connector Hitec S, Sanwa(Airtronics), Futaba J

- 57342 : Servo Connector
- 57343 : Female Servo Connector
- 57344 : 6 inch Aileron Extension
- 57345 : 12 inch Aileron Extension
- 57346 : 24 inch Aileron Extension
- 57347 : 36 inch Aileron Extension Heavy Duty Aileron Extension & Male / Female Servo Connector Only Hitec S, Futaba J
- 54601 : Servo Connector
- 54602 : Female Servo Connector
- 54603 : 6 inch Heavy Duty Aileron Extension
- 54604 : 12 inch Heavy Duty Aileron Extension
- 54605 : 24 inch Heavy Duty Aileron Extension
- 54606 : 36 inch Heavy Duty Aileron Extension
- 54607 : Twisted Heavy Duty Gold Pin Servo Connector
- 54608 : Twisted Heavy Duty Gold Pin Female Servo Connector
- 54609 : Twisted 6 Inch Extension Heavy Wire
- 54610 : Twisted 12 Inch Extension Heavy Wire
- 54611 : Twisted 24 Inch Extension Heavy Wire
- 54612 : Twisted 36 Inch Extension Heavy Wire
- 54651 : Light Weight Servo Connector (160MM)
- 54652 : Standard Light Weight Female Connector (300MM)

"Y" Extension Harness Hitec S, Sanwa(Airtronics), Futaba J

- 57350 : Y Extension Wire(Long)
- 57351 : Y Extension Wire for Micro Receiver 5th Channel(Short)

Heavy Duty "Y" Extension Harness Only Hitec S, Futaba J

- 54701 : Y Heavy Duty Extension Wire(Short)
- 54702 : Y Heavy Duty Extension Wire(Long)
- 54703 : Twisted Heavy Duty Y Extension Wire Short
- 54704 : Twisted Heavy Duty Y Extension Wire Long

Miscellaneous Connector

- 54801 : S-01 Housing & Gold Pin(1 set)
- 54804 : 3 Color Heavy Gage Servo Wire 50feet(15.24m)
- 56210 : Female Red BEC Connector
- 56211 : Male Red BEC Connector
- 57417 : 3 Color Servo Wire 50feet(15.24m)
- 57431 : Tamiya Type Battery Connector Housing & Pin
- 57432 : Motor Connector Housing & Pin
- 57433 : Tamiya Type Batt Connector(1 pair)
- 57434 : Motor Connector(1 pair)
- 57435 : Male & Male Tamiya Battery Extension Connector
- 57436 : Female & Female Tamiya Battery Extension Connector
- 57444 : S-01 Housing & Pin(1 set)

Miscellaneous Accessories

- 58480 : Flight Preserver Rubber with Velcro Tape
- 58490 : Double Sided Tape(5pcs)

PROMOTIONAL ITEMS

- 59601 : Hitec Embroidered Logo Hat
- 59602A : Hitec Logo T-Shirt Med
- 59602B : Hitec Logo T-Shirt Large
- 59602C : Hitec Logo T-Shirt X-Large
- 59602D : Hitec Logo T-Shirt XX Large
- 59603 : Hitec Logo Decal Sheet 5PCS

SKY SCOOTER PRO II

Check out the new Funtec Models Sky Scooter Pro 2, Ready-To-Fly R/C airplane. We improved our Sky Scooter Pro by adding a gearbox and new design propeller to give you 50% MORE POWER and TWICE the flight time! The Sky Scooter Pro 2 is offered complete, ready-to-fly, with a three channel Hitec radio already installed. We even supply the motor battery and charger! Made from durable and crash resistant ARCEL foam, the Sky Scooter Pro 2 is great fun for beginners and experienced pilots.



Sky Scooter Pro II (72MHz only)
Focus 3SS AM, HAS-03MB, SP-1010, HS-55 x 2, CG-84S Charger, 600mAh Ni-Cd Battery,

FUNTEC
MODELS

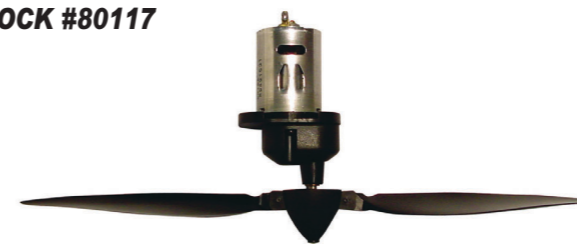


SKY SCOOTER PRO II

Up-grade your Sky Scooter Pro!

Funtec made it easy to upgrade your older Sky Scooter Pro to the performance of the Pro 2 with our completely assembled motor/gear box and prop. This affordable package is easy to install and will give your old Sky Scooter Pro new life as a Pro 2!

STOCK #80117



Spare Parts

Part No.	Part name	Contents
#80101	Fuselage Set	Fuselage, Belly Landing Protector, Dowel, Rubber Band
#80102	Main Wing Set	Complete Wing with, Aileron Horn (2)
#80103	Vertical/Horizontal Stabilizer	Vertical Stabilizer, Horizontal Stabilizer, Elevator Set, Double sided Tape
#80105	Propeller Hub & Spinner Set	Propeller Hub Set, Spinner
#80106	Gear Box Set	Gear Box, Motor Plate, Metal Pinion Gear, Screw (2), Metal Bushing, Oilite Bushing (2), Metal Gear Installation Shaft.
#80107	Motor Set	Pinion Installed Motor Set with Noise Killing Capacitor attached
#80108	Linkage Set	Aileron Linkage (2), Elevator Linkage Rod (2) Clevis (3)
#80109	Decals	For Sky Scooter Pro and Std. model
#80110	Safety Switch	Safety Switch Set
#80111	Ni-cd Battery Pack	7 Cell 300mAh Ni-cd Battery Pack
#80112	Ni-cd Battery Pack	7 Cell 600mAh Ni-cd Battery Pack
#80113	Gunther Prop	Direct Drive Prop (Std. On Pro Version)
#80114	Motor with capacitor attached	Motor for direct drive
#80116	Single blade set	Sky Scooter Pro 2
#80117	Up-grade set	To up-grade the Pro, to a Pro 2
#80118	entire folding prop assembly	Sky Scooter Pro 2
#54901	Decals	For Sky Scooter Pro 2