

# BUTTON LOAD CELLS

## SERIES BC 300

from 3 Kg to 0,5 tons



real sizes

### APPLICATIONS AND TECHNICAL FEATURES

The button load cells Series BC 300 find main applications where the very low profile and the extreme compactness are important. They are used in static and dynamic measurements, in compression (BC 302 - BC 303) and in tension and compression (BC 301), for general purpose on machines, for robotics as tactile sensors, for multipoints measurements.

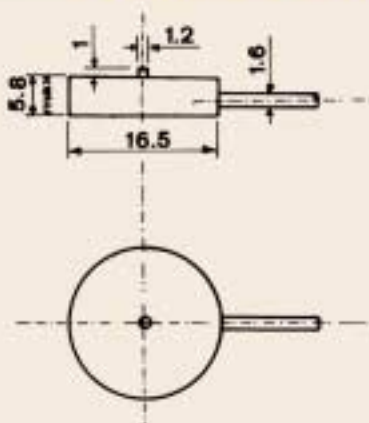
The body of the transducer is in aluminium alloy (= Al) or in high strength stainless steel (= Fe) as listed in the ranges below.

### TECHNICAL SPECIFICATIONS

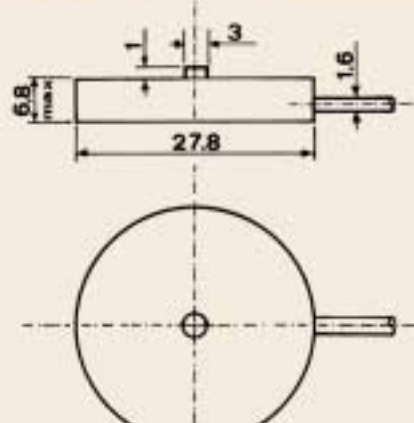
Measuring ranges: for BC 302: 0 + 3 - 6 - 12 - 20 - 30 (Al) - 60 - 100 (Fe) Kg FS. for BC 303: 0 + 150 - 350 - 500 (Fe) Kg FS.  
for BC 301: 0 + ± 3 - 6 - 12 - 20 - 30 - 60 (Al) - 100 - 150 (Fe) Kg FS.

- Sensitivity: 2 mV/V FS, typical. Total error:  $\leq \pm 0,5\%$  FS. Repeatability error:  $\leq \pm 0,1\%$  FS.
  - Thermal shift of zero and of sensitivity:  $\leq \pm 0,08\%$  FS/°C. Zero unbalance:  $\leq \pm 3\%$  FS.
  - Excitation: 5 V dc/ac; 6 V dc/ac max. Overload: 1,5 times FS max.
  - Electrical connection: by a cable 1 meter long.
- Fixing: BC 302 - BC 303: usually by cement; BC 301: by screws.

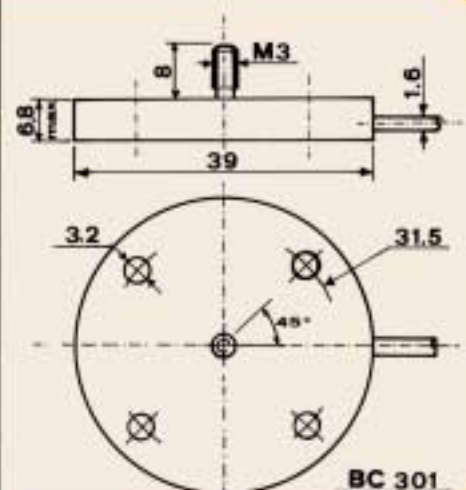
### OVERALL DIMENSIONS



BC 302



BC 303



BC 301