

Model LBM Series Load Buttons

Why INTERFACE LBM load cells are the best in class:

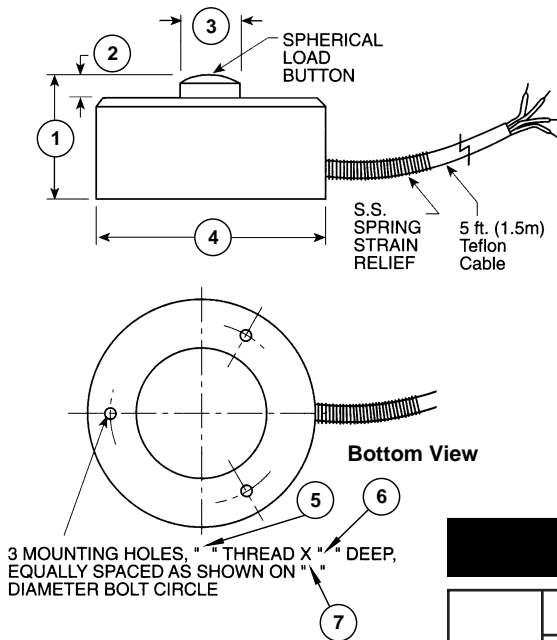
- Temperature compensated
- Integral load button
- Small diameter



ACCESSORIES*

Instrumentation

* Please call for additional information



SPECIFICATIONS

ACCURACY – (MAX ERROR)

Nonlinearity-% FS± 0.25
 Hysteresis-% FS± 0.20
 Nonrepeatability-% RO± 0.10

TEMPERATURE

Compensated Range-°F60 to 160
 Compensated Range-°C16 to 71
 Operating Range-°F-65 to 250
 Operating Range-°C-54 to 121
 Effect on Zero FS/°F – MAX± 0.005
 Zero Balance % FS±2

ELECTRICAL

Rated Output-mV/V (Nominal)2.0
 Bridge Resistance-Ohm (Nominal)350
 Excitation Voltage10

MECHANICAL

CalibrationComp.
 Safe Overload-% CAP150
 Ultimate Overload % of CAP300
 Cable length-ft5
 4-conductor Teflon insulated cable

DIMENSIONS

See Drawing	CAPACITY (lbf)									
	LBM Series									
	25, 50, 100		250, 500, 1K, 2K		5K, 10K		20K		50K	
	inch	mm	inch	mm	inch	mm	inch	mm	inch	mm
①	0.62	15.7	0.39	9.90	0.63	16.0	1.0	25.4	1.50	38.1
②	0.05	1.30	0.07	1.80	0.08	2.00	0.19	4.82	0.18	4.60
③	0.21	5.30	0.32	8.10	0.43	10.9	0.43	10.9	0.78	19.8
④	1.00	25.4	1.25	31.8	1.50	38.1	2.00	50.8	3.00	76.2
⑤	4-40 UNC		6-32 UNC		6-32 UNC		10-32 UNF		6-32 UNC	
⑥	0.19	4.83	0.25	6.35	0.25	6.35	0.40	10.2	0.25	6.35
⑦	0.75	19.00	1.00	25.4	1.25	31.8	1.687	42.8	2.375	60.33