

## Model LBS Series Load Buttons

Why INTERFACE LBS load cells are the best in class:

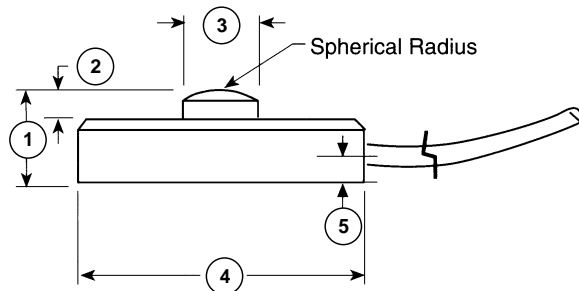
- Temperature compensated
- Integral load button
- Small diameter
- From .12" height



### ACCESSORIES\*

Instrumentation

\* Please call for additional information



### SPECIFICATIONS

#### ACCURACY – (MAX ERROR)

Nonlinearity-% FS .....± 0.25  
 Hysteresis-% FS .....± 0.25  
 Nonrepeatability-% RO .....± 0.10

#### TEMPERATURE

Compensated Range-°F .....60 to 160  
 Compensated Range-°C .....15 to 71  
 Operating Range-°F .....-65 to 225  
 Operating Range-°C .....-54 to 107  
 Effect on Zero FS/°F – MAX .....± 0.005  
 Zero Balance % FS.....±2

#### ELECTRICAL

Rated Output-mV/V (Nominal) .....2.0  
 Bridge Resistance-Ohm (Nominal) ....350  
 Excitation Voltage.....5  
 Excitation Voltage – MAX.....7

#### MECHANICAL

Calibration .....Comp.  
 Safe Overload-% CAP .....150  
 Ultimate Overload % of CAP .....300  
 Cable length-ft.....5  
 4-conductor Teflon insulated cable with temperature compensation board

### DIMENSIONS

See Drawing	CAPACITY (lbf)					
	LBS Series					
	5, 10, 25, 50		100, 250		500, 1K	
	inch	mm	inch	mm	inch	mm
①	0.12	3.00	0.15	3.80	0.25	6.4
②	0.03	0.80	0.02	0.50	0.03	0.80
③	0.09	2.20	0.12	3.00	0.24	6.10
④	0.38	9.80	0.50	13.0	0.75	19.0
⑤	.04	1.0	.06	1.5	.10	2.5