

Erratum

Title of Subsection 2.1.1 is to change from '~~Load cells and calibration~~' to '**Load cells**'.

In Subsection 3.3, Module *haptic_force*, Figure 3.5 and it's legend are to be changed for the ones below.

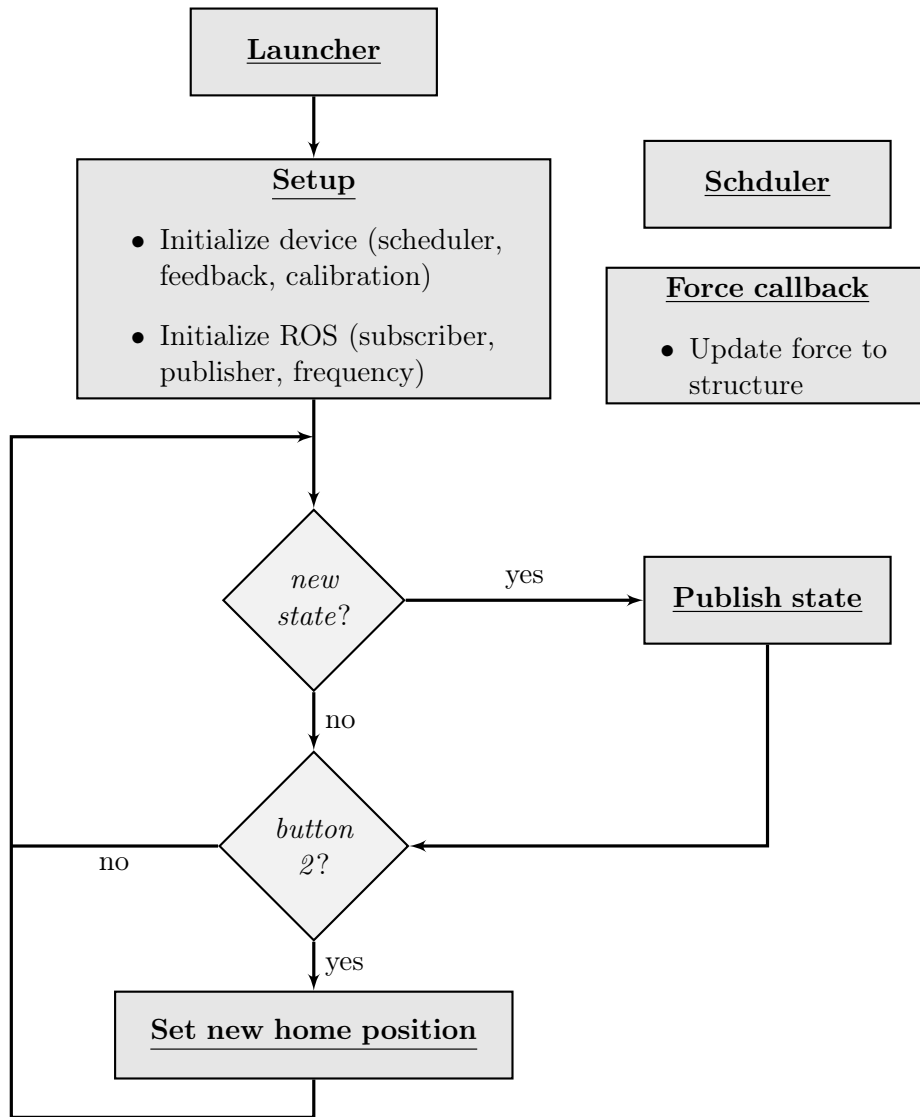


Figure 3.5: Program structure of the *phantom_control* node.

In Chapter 4, Robot's demonstrations, in the paragraph before Figure 4.2 there is a missing sentence. The following sentence is to be added at the end of the paragraph: *'In all of the demonstrations, the used arrangement of the load cells in the robot's feet is depicted in Figure 4.2.1 where the red cells correspond to the LSB-10 and the blue cells to the LBS-5.'*

After Figure 4.2, the Figure 4.2.1 is added as follows.

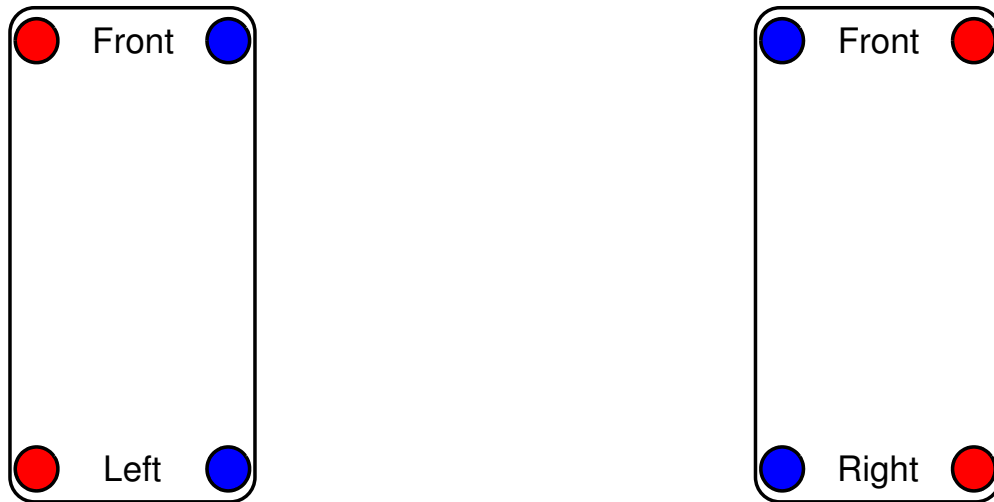


Figure 4.2.1: Load cells arrangement for the demonstrations.