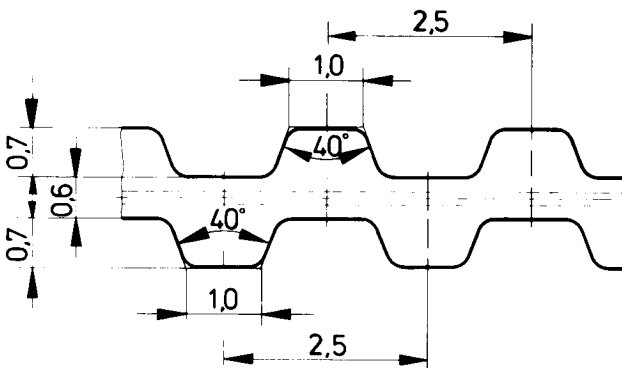


Ordering Example

10 T 2,5 / 380		
Width (mm)	Type	/ Length (mm)

DL



Ordering Example

10 T 2,5 / 457,5 - DL		
Width (mm)	Type	/ Length (mm)
	double-sided	

Please note that all technical data refers to belts made from the standard Polyurethane and standard steel tension members.

All T 2,5 belts are available in the following options:

- coloured (see page 42)
- with kevlar tension members
- anti-static (see page 43)
- special polyurethanes on request

Please contact our technical department.

Belt weight per 10 mm width: 0,015 kg/m

DL Belt weight per 10 mm width: 0,016 kg/m

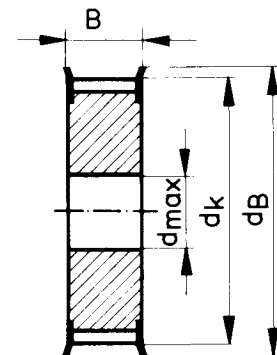
Standard Belt width b (mm)	4	6	10
----------------------------	---	---	----

Intermediate and larger widths available

T 2,5 Belt Length	T 2,5-DL Belt Length	No. of teeth z _B
T 2,5/ 55 FA ¹		22
T 2,5/ 120		48
T 2,5/ 145		58
T 2,5/ 160		64
T 2,5/ 160 FA ¹		64
T 2,5/ 177,5		71
T 2,5/ 180		72
T 2,5/ 182,5		73
T 2,5/ 200		80
T 2,5/ 210 FA ¹		84
T 2,5/ 230		92
T 2,5/ 245		98
T 2,5/ 265		106
T 2,5/ 285		114
T 2,5/ 290		116
T 2,5/ 305		122
T 2,5/ 317,5	T 2,5/317,5-DL	127
T 2,5/ 330		132
T 2,5/ 380		152
T 2,5/ 420		168
T 2,5/ 480	T 2,5/457,5-DL	183
T 2,5/ 500		192
T 2,5/ 540 FA ¹		200
T 2,5/ 600		216
T 2,5/ 600 FA ¹		240
T 2,5/ 620		240
T 2,5/ 650		248
T 2,5/ 780		260
T 2,5/ 950		312
T 2,5/1300		380
		520

¹ with thicker backing

Timing Pulley Standard Range
tinted sizes · see page 55



Standard Belt width	b (mm)	4	6	10
Timing Pulley width	B (mm)	8	10	14

Intermediate and larger widths available

z = No. of teeth

d_k = Outside diameter

d_B = Outside flange diameter

d_{max} = max. bore diameter for flanged Timing Pulleys without a keyway

z	d_k mm	d_{max} mm	d_B mm
10	7,45	3	10
11	8,25	3	11
12	9,00	3	12
13	9,80	3,5	13
14	10,60	4	14
15	11,40	5	15
16	12,20	6	16
17	13,00	7	16
* 18	13,80	7	17
19	14,60	8	18
20	15,40	9	19
21	16,20	10	20
22	17,00	10	20
23	17,80	11	21
24	18,55	11	22
25	19,35	12	23
26	20,15	13	23
27	20,95	13	24
28	21,75	13	25
29	22,55	14	26
30	23,35	15	27
31	24,15	16	27
32	24,95	16	28
33	25,75	17	29
34	26,55	17	30
35	27,35	20	31
36	28,15	20	31
37	28,90	21	32
38	29,70	21	33
39	30,50	22	34
40	31,30	23	35
41	32,10	24	35
42	32,90	24	36
43	33,70	24	37
44	34,50	25	38

z	d_k mm	d_{max} mm	d_B mm
45	35,30	26	39
46	36,10	27	39
47	36,90	27	40
48	37,70	27	41
49	38,45	28	42
50	39,25	29	43
51	40,05	30	43
52	40,85	30	44
53	41,65	30	45
54	42,45	31	46
55	43,25	32	47
56	44,05	32	47
57	44,85	32	48
58	45,65	33	49
59	46,45	34	50
60	47,25	35	51
61	48,05	36	51
62	48,80	37	52
63	49,60	37	53
64	50,40	37	54
65	51,20	38	55
66	52,00	38	55
67	52,80	39	56
68	53,60	39	57
69	54,40	40	58
70	55,20	41	59
71	56,00	42	59
72	56,80	42	60
73	57,60	43	61
74	58,35	44	61
75	59,15	45	62
76	59,95	45	63
77	60,75	46	64
78	61,55	47	65
79	62,35	47	66

z	d_k mm	d_{max} mm	d_B mm
80	63,15	47	67
81	63,95	47	67
82	64,75	48	68
83	65,55	49	69
84	66,35	50	70
85	67,15	50	71
86	67,95	51	71
87	68,70	51	72
88	69,50	52	73
89	70,30	52	74
90	71,10	53	75
91	71,90	53	75
92	72,70	54	76
93	73,50	55	77
94	74,30	55	78
95	75,10	56	79
96	75,90	57	79
97	76,70	57	80
98	77,50	58	81
99	78,25	58	82
100	79,05	59	83
101	79,85	59	83
102	80,65	60	84
103	81,45	61	85
104	82,25	62	86
105	83,05	63	87
106	83,85	63	87
107	84,65	64	88
108	85,45	64	89
109	86,25	65	90
110	87,05	65	91
111	87,85	65	91
112	88,60	66	92
113	89,40	67	93
114	90,20	68	94

Ordering examples
see page 52

* --- Minimum no. of teeth with contraflexure
Minimum diameter of idler running on teeth \varnothing 18 mm
running on back \varnothing 15 mm