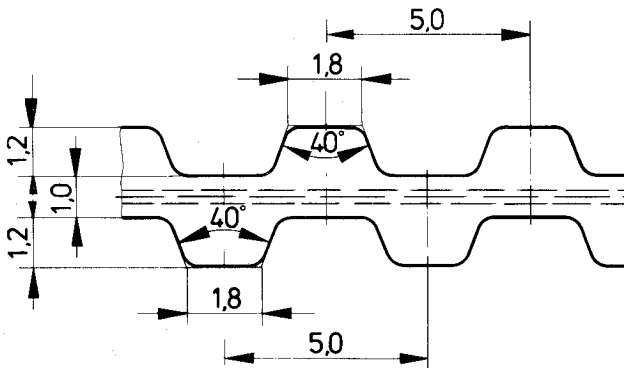


Ordering Example

10 T5 / 455
Width Type / Length (mm) (mm)

DL



Ordering Example

10 T5 / 460 - DL
Width Type / Length (mm) double-sided

Please note that all technical data refers to belts made from the standard Polyurethane and standard steel tension members.

All T5 belts are available in the following options:

- coloured (see page 42)
- with kevlar tension members
- anti-static (see page 43)
- with 'E' tension members (see page 39)
- special polyurethanes on request

Please contact our technical department.

Belt weight per 10 mm width: 0,024 kg/m
DL Belt weight per 10 mm width: 0,027 kg/m

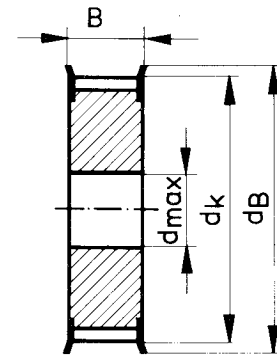
Standard Belt width b (mm)	6	10	16	25
----------------------------	---	----	----	----

Intermediate and larger widths available

T5 Belt Length	T 5-DL Belt Length	No. of teeth z _B
T5/ 100		20
T5/ 150	T 5/ 150-DL	30
T5/ 165		33
T5/ 180		36
T5/ 185		37
T5/ 200		40
T5/ 210		42
T5/ 215		43
T5/ 220		44
T5/ 225		45
T5/ 245		49
T5/ 250		50
T5/ 255		51
T5/ 260	T 5/ 260-DL	52
T5/ 270		54
T5/ 280		56
T5/ 295		59
	T 5/ 300-DL	60
T5/ 305		61
T5/ 330		66
T5/ 340		68
T5/ 355		71
T5/ 365		73
T5/ 390		78
T5/ 400		80
T5/ 410	T 5/ 410-DL	82
T5/ 420		84
T5/ 455	T 5/ 460-DL	91
		92
T5/ 480		96
T5/ 500		100
T5/ 505		101
T5/ 510		102
	T 5/ 515-DL	103
T5/ 525	T 5/ 525-DL	105
T5/ 545		109
T5/ 550		110
T5/ 560		112
T5/ 575		115
T5/ 590	T 5/ 590-DL	118
T5/ 610		122
T5/ 620	T 5/ 620-DL	124
	T 5/ 625-DL	125
T5/ 630		126
T5/ 630 FA ¹		126
T5/ 650		130
T5/ 690		138
T5/ 690 FA ¹		138
T5/ 700		140
T5/ 720		144
T5/ 725		145
T5/ 750	T 5/ 750-DL	150
T5/ 765		153
T5/ 780		156
T5/ 800		160
T5/ 815	T 5/ 815-DL	163
T5/ 840		168
	T 5/ 860-DL	172
T5/ 900		180
T5/ 920		184
T5/ 925		185
T5/ 940	T 5/ 940-DL	188
T5/ 990		198
T5/1075		215
T5/1075 FA ¹		215
T5/1100	T 5/1100-DL	220
T5/1160		232
T5/1215		243
T5/1315		263
	T 5/1325-DL	265
T5/1380		276
T5/1500		300

¹ with thicker backing

Timing Pulley Standard Range
tinted sizes · see page 56



Standard Belt width	b (mm)	6	10	16	25
Timing Pulley width	B (mm)	12	16	22	32

Intermediate and larger widths available

z = No. of teeth

dk = Outside diameter

dB = Outside flange diameter

d_{max} = max. bore diameter for flanged Timing Pulleys without a keyway

z	dk mm	d _{max} mm	dB mm
10	15,05	6	20
11	16,65	6	22
12	18,25	6	23
13	19,85	8	25
14	21,45	8	26
* 15	23,05	10	28
16	24,60	12	30
17	26,20	14	31
18	27,80	16	33
19	29,40	16	34
20	31,00	18	36
21	32,60	20	37
22	34,15	22	39
23	35,75	24	40
24	37,35	24	42
25	38,95	25	43
26	40,55	25	45
27	42,15	27	47
28	43,75	29	48
29	45,30	31	50
30	46,90	33	51
31	48,50	35	53
32	50,10	37	55
33	51,70	39	56
34	53,30	39	58
35	54,85	40	59
36	56,45	42	61
37	58,05	43	62
38	59,65	45	64
39	61,25	45	66
40	62,85	47	67
41	64,40	48	69
42	66,00	50	70
43	67,60	52	72
44	69,20	52	74

z	dk mm	d _{max} mm	dB mm
45	70,80	54	75
46	72,40	56	77
47	73,95	58	78
48	75,55	60	80
49	77,15	60	82
50	78,75	60	83
51	80,35	62	85
52	81,95	64	86
53	83,55	66	88
54	85,10	66	90
55	86,70	68	91
56	88,30	70	93
57	89,90	72	94
58	91,50	74	96
59	93,10	74	97
60	94,65	76	99
61	96,25	79	101
62	97,85	80	102
63	99,45	82	104
64	101,05	82	105
65	102,65	84	107
66	104,20	86	109
67	105,80	88	110
68	107,40	90	112
69	109,00	90	113
70	110,60	90	115
71	112,20	92	117
72	113,75	94	118
73	115,35	96	120
74	116,95	96	121
75	118,55	98	123
76	120,15	100	125
77	121,75	102	126
78	123,35	104	138
79	124,90	104	129

z	dk mm	d _{max} mm	dB mm
80	126,50	106	131
81	128,10	108	133
82	129,70	110	134
83	131,30	110	136
84	132,90	112	137
85	134,45	114	139
86	136,05	116	140
87	137,65	119	142
88	139,25	119	144
89	140,85	120	145
90	142,45	120	147
91	144,00	122	148
92	145,60	124	150
93	147,20	126	152
94	148,80	126	153
95	150,40	129	155
96	152,00	130	156
97	153,55	130	158
98	155,15	132	160
99	156,75	132	161
100	158,35	134	163
101	159,95	136	164
102	161,55	139	166
103	163,15	140	168
104	164,70	140	169
105	166,30	140	171
106	167,90	142	172
107	169,50	146	174
108	171,10	146	176
109	172,70	148	177
110	174,25	150	179
111	175,85	150	180
112	177,45	152	182
113	179,05	152	184
114	180,65	152	185

Ordering examples
see page 52

* --- Minimum no. of teeth with contraflexure
Minimum diameter of idler running on teeth \varnothing 30 mm
running on back \varnothing 30 mm