

Perception

Wide angle and foveated for active perception

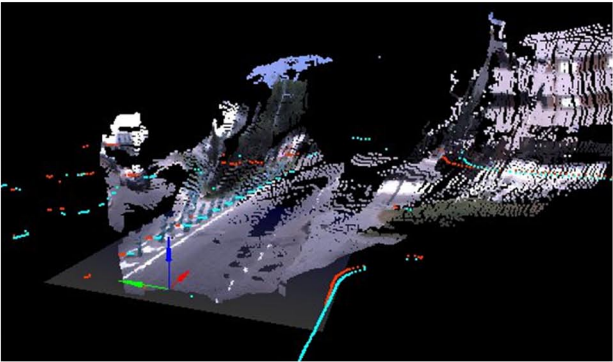


Peripheral Camera



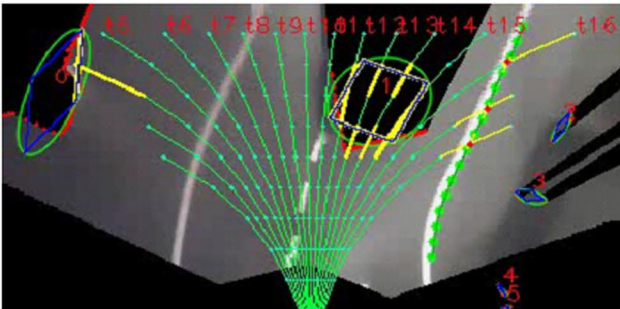
Foveated Camera

Sensor Fusion



3D MultiSensor View

Motion Planner



Path Planning

Objectives

Provide a sensor rich research platform for the study of Driver Assistance Systems to the scientific community.

Redundant, multi-sensorial perception.

Creation of massive amounts of data for online and offline study.

Development of perception and sensor integration algorithms.

Increase road safety and reduce traffic accident statistics.



Contacts

Visit us and follow us:
<http://atlas.web.ua.pt>
dem-atlas-info@ua.pt
become atlascar's friend at facebook



Atlas Project

Driver Assistance Autonomous Driving



Department of Mechanical Engineering
Aveiro University